



TIFAS® Grip blind rivets



The combination of a consistently large blind-side footprint, vibration resistance and a partially load-bearing as well as securely retained mandrel make the TIFAS® Grip blind rivet the ideal choice for thin components that need to withstand high loads. The application of bearing pressure compensates for drilled hole tolerances.

Benefits at a glance

- Universal use
- Forms a large blind side footprint, very suitable for thin materials, superior anti-removal values
- Securely fitting mandrel (rattle-free)
- Enhanced tensile strength in the area of shear when the mandrel rests within the area of shear
- Rolled mandrel, reduced jaw wear and tear
- Mandrel head with tapered end
- Quick and secure installation
- Permanent secure fixing
- Heatless installation means component will not warp
- Eliminates extensive refinishing
- Ideal for lightweight constructions

Applications

- General industry
- Automotive industry
- Construction industry
- Bodywork and vehicle manufacture

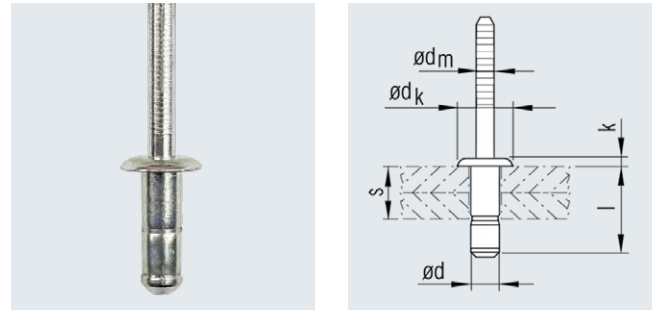


TIFAS® Grip blind rivets

Brazier head with grooved mandrel

Material

	Sleeve		Mandrel
	Steel, galvanised		Steel, galvanised



Nominal \varnothing d [mm]	Bore \varnothing [mm]	Grip range s [mm]	Blind sleeve l ±0.5 [mm]	Blind rivet head \varnothing dk** [mm]	Height k max. [mm]	Mandrel \varnothing dm nom. [mm]	Nominal strength at break*		Article No.
							Shear N	Tensile N	
3.2	3.3	1.0 - 3.0	7.0	6.5	1.4	2.0	1000	1050	413 272 000
		3.0 - 5.0	9.0	6.5	1.4	2.0	1400	1050	413 273 000
		5.0 - 7.0	11.5	6.5	1.4	2.0	2000	1050	413 274 000
4.0	4.1	1.0 - 3.0	8.0	8.0	1.5	2.5	1900	2200	413 275 000
		3.0 - 5.0	10.0	8.0	1.5	2.5	2800	2200	413 276 000
		5.0 - 7.0	12.5	8.0	1.5	2.5	3300	2200	413 277 000
4.8	4.9	1.5 - 3.5	9.0	9.0	1.5	3.0	2800	3000	413 280 000
		3.5 - 6.0	12.0	9.0	1.5	3.0	3300	3000	413 281 000
		6.0 - 8.5	15.0	9.0	1.5	3.0	4400	3000	413 282 000

* Strengths at break relate to rivet failure

** Tolerance: \varnothing 3.2: +0.6 mm / -0.7 mm; \varnothing 4.0: +0.3 mm / -1.0 mm; \varnothing 4.8: +0.9 mm / -0.4 mm

Other designs available on request.



TIFAS® Grip blind rivets

Brazier head with grooved mandrel

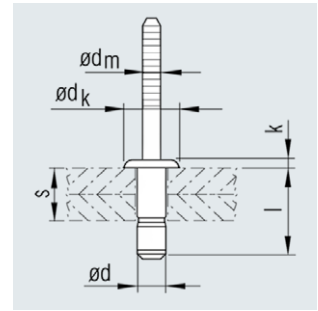
Material

Sleeve

Stainless steel A2

Mandrel

Stainless steel A2



Nominal \varnothing d [mm]	Bore \varnothing [mm]	Grip range s [mm]	Blind sleeve l ± 0.5 [mm]	Blind rivet head		Mandrel \varnothing dm nom. [mm]	Nominal strength at break*		Article No.
				\varnothing dk +0.6 -0.7 [mm]	Height k max. [mm]		Shear N	Tensile N	
3.2	3.3	1.0 - 3.0	7.0	6.5	1.4	2.0	1300	1600	413 400 907
		3.0 - 5.0	9.2	6.5	1.4	2.0	1400	1600	413 401 907
		5.0 - 7.0	11.5	6.5	1.4	2.0	2500	1600	413 402 907
4.0	4.1	1.0 - 3.0	8.0	7.7	1.5	2.5	2200	3200	413 410 907
		3.0 - 5.0	10.0	7.7	1.5	2.5	4200	3200	413 411 907
		5.0 - 7.0	12.5	7.7	1.5	2.5	4200	3200	413 412 907
4.8	4.9	1.5 - 3.5	10.0	9.3	1.5	3.0	4400	4000	413 420 907
		3.5 - 6.0	12.0	9.3	1.5	3.0	4400	4000	413 421 907
		6.0 - 8.5	15.0	9.3	1.5	3.0	4400	4000	413 422 907

* Strengths at break relate to rivet failure

The shear strength at break is impacted by where the spent mandrel is located on the area of break.

Other designs available on request.