

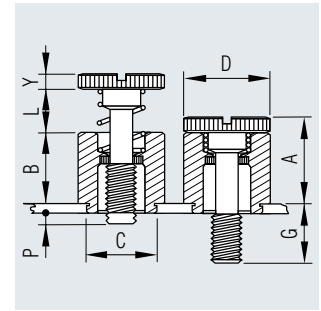
# Captive® self-clinching fasteners



## Self-clinching panel fasteners for metal

### Material

A2 stainless steel, 300 series, passivated (CPFC2 series), suitable for sheet hardness HRB 70 or less, min. material thickness 1.5 mm



Thread size	Bore $\varnothing$ +0.08 -0.00 [mm]	A max [mm]	B $\pm 0.25$ [mm]	C max [mm]	D +0.40 -0.25 [mm]	G +0.4 [mm]	L +0.4 [mm]	P +0.4 [mm]	Y $\pm 0.13$ [mm]		Description	Article No.
										min [mm]		
M 3	6.73	9.14	7.2	6.71	7.92	6.4	4.8	0.0	1.83	6.4	CPFC2 M 3-40	358 744 000
		9.14	7.2	6.71	7.92	9.5	4.8	3.2	1.83	6.4	CPFC2 M 3-62	358 746 000
		9.14	7.2	6.71	7.92	12.7	4.8	6.4	1.83	6.4	CPFC2 M 3-84	-
M 4	7.92	11.43	9.3	7.90	9.53	7.9	6.4	0.0	2.08	7.9	CPFC2 M 4-50	358 745 000
		11.43	9.3	7.90	9.53	11.1	6.4	3.2	2.08	7.9	CPFC2 M 4-72	358 754 000
		11.43	9.3	7.90	9.53	14.3	6.4	6.4	2.08	7.9	CPFC2 M 4-94	-
M 5	8.74	11.47	9.3	8.72	10.31	7.9	6.4	0.0	2.08	8.7	CPFC2 M 5-50	-
		11.47	9.3	8.72	10.31	11.1	6.4	3.2	2.08	8.7	CPFC2 M 5-72	-
		11.47	9.3	8.72	10.31	14.3	6.4	6.4	2.08	8.7	CPFC2 M 5-94	358 757 000
M 6	10.49	14.73	12.0	10.47	11.89	9.5	7.9	0.0	2.46	9.5	CPFC2 M 6-60	-
		14.73	12.0	10.47	11.89	12.7	7.9	3.2	2.46	9.5	CPFC2 M 6-82	-
		14.73	12.0	10.47	11.89	15.9	7.9	6.4	2.46	9.5	CPFC2 M 6-04	-

## Technical specifications

Thread size	Sheet material		Aluminium (H 34)	
	Steel		Aluminium (H 34)	
	Installation force [kN]	Push-out [N]	Installation force [kN]	Push-out [N]
M 3	13.3	1330	10.7	1070
M 4	16.9	1780	12.9	1330
M 5	17.8	2220	13.3	1780
M 6	22.2	2670	15.6	1780

Guidelines only - the exact values will need to be calculated on the original component.

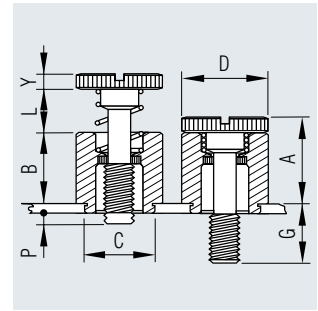


# Captive® self-clinching fasteners

## Self-clinching panel fasteners for plastics

### Material

A2 stainless steel, 300 series, passivated (CPFK series), min. material thickness 1.5 mm



Thread size	Bore $\varnothing$	A	B	C	D	G	L	P	Y		Description	Article No.
	+0.08				+0.40							
	-0.00	max	$\pm 0.25$	$\pm 0.08$	-0.25	+0.4	+0.4	+0.4	$\pm 0.13$	min		
	[mm]	[mm]	[mm]	[mm]	[mm]	[mm]	[mm]	[mm]	[mm]	[mm]		
M 3	6.73	9.14	7.2	7.19	7.92	6.4	4.8	0.0	1.83	5.8	CPFK M 3-40	358 734 000
		9.14	7.2	7.19	7.92	9.5	4.8	3.2	1.83	5.8	CPFK M 3-62	-
		9.14	7.2	7.19	7.92	12.7	4.8	6.4	1.83	5.8	CPFK M 3-84	-

### Technical specifications

Thread size	Installation force [kN]	Push-out [N]	Torque-out [Nm]
M 3	1.1	245	3


Guidelines only - the exact values will need to be calculated on the original component.




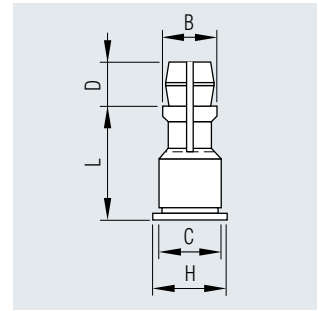
# Captive® self-clinching fasteners

## Spring-top standoffs for metal

### Material

 Zinc-plated steel (CFSSS series)  
Suitable for sheet hardness HRB 60 or less

 A2 stainless steel, 300 series, passivated (CFSSC series)  
Suitable for sheet hardness HRB 70 or less



Removable panel mounting hole [mm]	L ± 0.13 [mm]	B ± 0.13 [mm]	C max [mm]	D ± 0.13 [mm]	H ± 0.13 [mm]	Stainless steel		Steel	
						Description	Article No.	Description	Article No.
4	8	4.78	5.39	3.58	6.35	CFSSC 4-8	358 860 000	CFSSS 4-8	358 870 000
	10	4.78	5.39	3.58	6.35	CFSSC 4-10	-	CFSSS 4-10	358 875 000
	12	4.78	5.39	3.58	6.35	CFSSC 4-12	-	CFSSS 4-12	358 872 000
	14	4.78	5.39	3.58	6.35	CFSSC 4-14	-	CFSSS 4-14	-
	16	4.78	5.39	3.58	6.35	CFSSC 4-16	-	CFSSS 4-16	358 874 000
	18	4.78	5.39	3.58	6.35	CFSSC 4-18	-	CFSSS 4-18	-
	20	4.78	5.39	3.58	6.35	CFSSC 4-20	-	CFSSS 4-20	-
	22	4.78	5.39	3.58	6.35	CFSSC 4-22	-	CFSSS 4-22	-
	25	4.78	5.39	3.58	6.35	CFSSC 4-25	-	CFSSS 4-25	358 722 000

Hole ø anvil = Dimension "A" +0.10/+0.18 mm.

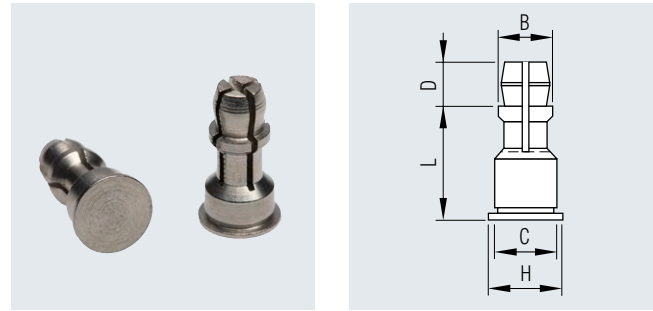


# Captive® self-clinching fasteners

## Spring-top standoffs for metal

### Material

Aluminium  
(CFSSA series)  
Suitable for sheet hardness  
HRB 50 or less



Removable panel mounting hole [mm]	L [mm]	B [mm]	C [mm]	D [mm]	H [mm]	Aluminium Description	Article No.
4	8	4.78	5.39	3.58	6.35	CFSSA 4-8	358 880 000
	10	4.78	5.39	3.58	6.35	CFSSA 4-10	358 883 000
	12	4.78	5.39	3.58	6.35	CFSSA 4-12	-
	14	4.78	5.39	3.58	6.35	CFSSA 4-14	-
	16	4.78	5.39	3.58	6.35	CFSSA 4-16	358 693 000
	18	4.78	5.39	3.58	6.35	CFSSA 4-18	-
	20	4.78	5.39	3.58	6.35	CFSSA 4-20	358 719 000
	22	4.78	5.39	3.58	6.35	CFSSA 4-22	-
	25	4.78	5.39	3.58	6.35	CFSSA 4-25	-

Hole ø anvil = Dimension "A" +0.10/+0.18 mm.

## Technical specifications

Series	Fixed panel						Removable panel				
	Fixed panel mounting hole +0.08 -0.00 [mm]	Material	Hardness max HRB	Material thickness min [mm]	Location tolerance min [mm]	Removable panel mounting hole +0.08 -0.00 [mm]	Material 1.5 mm steel	Material thickness min [mm]	Location tolerance min [mm]		
CFSSA	5.4	Metal	HRB 50	1	6.6	± 0.134	4.0	PC board or metal	1 - 1.8	2.5	
CFSSS	5.4	Metal	HRB 60	1	6.6	± 0.134	4.0	PC board or metal	1 - 1.8	2.5	
CFSSC	5.4	Metal	HRB 70	1	6.6	± 0.134	4.0	PC board or metal	1 - 1.8	2.5	

Series	Fixed panel				Removable panel		
	Material	Installation force [kN]	Push-out [N]	Max. first on force [N]	Min. first off force [N]	Max 15th off force [N]	
CFSSA	1.0 aluminium HRB 25	6.7	880	58	13	4	
CFSSS	1.0 aluminium HRB 25	6.7	880	89	27	9	
CFSSC	1.5 steel HRB 64	16.0	1780	89	27	9	

Guidelines only - the exact values will need to be calculated on the original component.

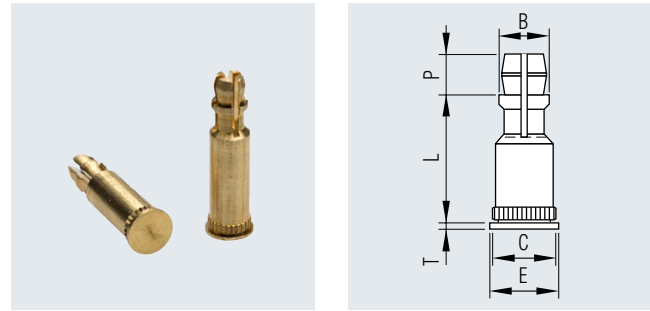


# Captive® self-clinching fasteners

## Spring-top standoffs for printed circuit boards

### Material

Brass (CFKSSB series)  
 Suitable for sheet hardness  
 HRB 60 or less,  
 no surface finish



Removable panel mounting hole [mm]	L [mm]	B [mm]	C [mm]	E [mm]	P [mm]	T [mm]	Description	Article No.
4	8.0	4.77	5.74	6.35	3.58	0.51	CFKSSB 4-8	-
	10.0	4.77	5.74	6.35	3.58	0.51	CFKSSB 4-10	-
	12.0	4.77	5.74	6.35	3.58	0.51	CFKSSB 4-12	-
	14.0	4.77	5.74	6.35	3.58	0.51	CFKSSB 4-14	-
	16.0	4.77	5.74	6.35	3.58	0.51	CFKSSB 4-16	-
	18.0	4.77	5.74	6.35	3.58	0.51	CFKSSB 4-18	-
	20.0	4.77	5.74	6.35	3.58	0.51	CFKSSB 4-20	-
	22.0	4.77	5.74	6.35	3.58	0.51	CFKSSB 4-22	-
	25.0	4.77	5.74	6.35	3.58	0.51	CFKSSB 4-25	-

Hole ø anvil = Dimension "A" +0.10/+0.18 mm.

### Technical specifications

Series	Fixed panel						Removable panel			
	Fixed panel mounting hole [mm]	Material	Hardness	Material thickness [mm]	Location tolerance [mm]	Removable panel mounting hole [mm]	Material	Material thickness [mm]	Location tolerance [mm]	
CFKSSB	5.4	PC boards	HRB 65	1.25	± 0.13	4.0	PC board or metal	1 - 1.8	2.5	

Series	Fixed panel			Removable panel		
	Material	Installation force [kN]	Push-out [N]	Max. first on force [N]	Min. first off force [N]	Max. 15th off force [N]
CFKSSB	1.52 FR-4 Fibreglas	2.2	484	58	13	4

Guidelines only - the exact values will need to be calculated on the original component.

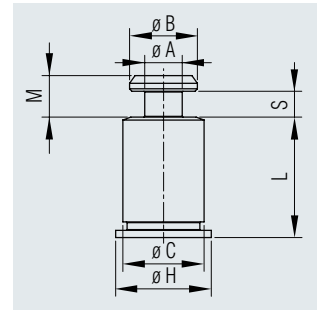


# Captive® self-clinching fasteners

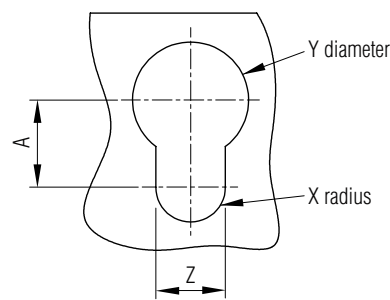
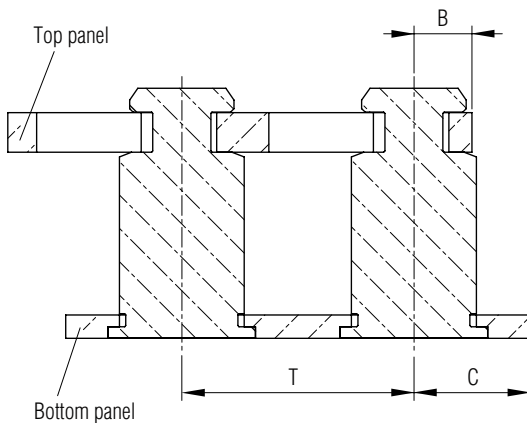
## Slide-top standoffs for metal

### Material

A2 stainless steel, 300 series, (CFSKC series)  
Suitable for sheet hardness HRB 70 or less



Panel code	L	A	B	C	S	M	H	Hole	Stainless steel Description	Article No.
[mm]	± 0.13 [mm]	±0.08 [mm]	±0.08 [mm]	max [mm]	±0.08 [mm]	max [mm]	nom [mm]	+0.08 -0.00 [mm]		
61.5	6	2.51	4.5	5.39	1.73	2.75	6.35	5.5	CFSKC 61.5-6	358 912 000
	8	2.51	4.5	5.39	1.73	2.75	6.35	5.5	CFSKC 61.5-8	358 803 000
	10	2.51	4.5	5.39	1.73	2.75	6.35	5.5	CFSKC 61.5-10	-
	12	2.51	4.5	5.39	1.73	2.75	6.35	5.5	CFSKC 61.5-12	358 904 000
	14	2.51	4.5	5.39	1.73	2.75	6.35	5.5	CFSKC 61.5-14	-
	16	2.51	4.5	5.39	1.73	2.75	6.35	5.5	CFSKC 61.5-16	358 905 000
	18	2.51	4.5	5.39	1.73	2.75	6.35	5.5	CFSKC 61.5-18	-
	20	2.51	4.5	5.39	1.73	2.75	6.35	5.5	CFSKC 61.5-20	-
	22	2.51	4.5	5.39	1.73	2.75	6.35	5.5	CFSKC 61.5-22	-
	25	2.51	4.5	5.39	1.73	2.75	6.35	5.5	CFSKC 61.5-25	-



### Technical specifications

Test panel material	1.52 mm cold-rolled steel		1.52 mm 5052-H34 aluminium	
Chassis panel code	Installation [kN]	Push-out [N]	Installation [kN]	Push-out [N]
61.5	14.3	2650	7	1100

Bottom panel	Bottom panel			Top panel				Panel thickness	Minimum spacing
Bottom mounting hole	Panel thickness	Spacing C	Tolerance T	Top mounting hole X nom	Y ±0.08	Z ±0.08	A min		
5.4	1	6.6	± 0.13	1.5	5	3	3.75	1.45 - 1.62	4.1

Subject to change