



# TIFAS® plastic retainers



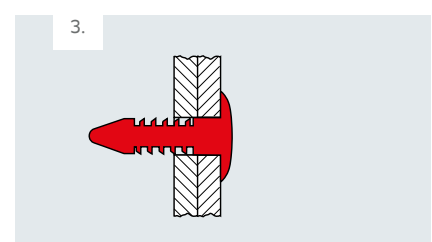
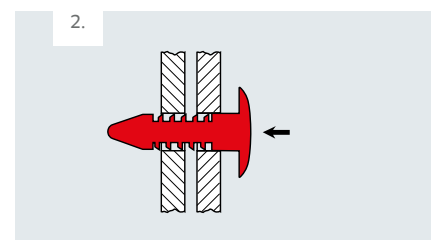
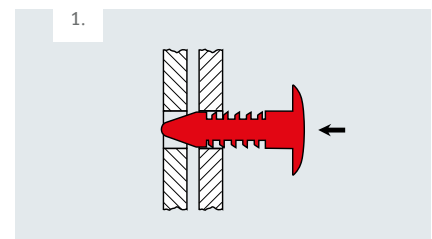
Plastic rivet for connecting and blind hole applications, partially detachable. Especially useful on painted surfaces. Non-corrosive.

## Benefits at a glance

- Ideal for blind side holes in timber components for securing a component
- Can be installed with applied force (e.g. hammer)
- Universal use
- Quick and secure installation
- Heatless installation means component will not warp.
- Eliminates extensive refinishing

## Applications

- Furniture industry
- General industry
- Bodywork and vehicle manufacture



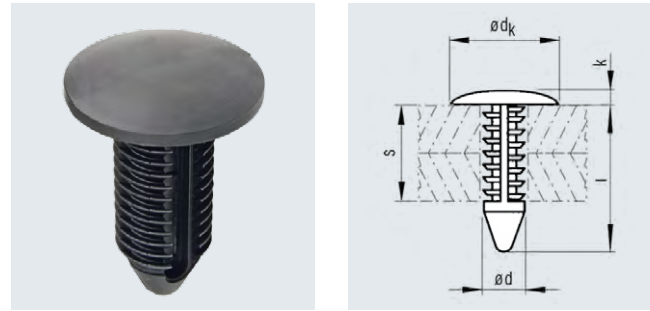
# TIFAS® plastic retainers



## Dome head

### Material

Rivet body  
Plastic, Polyamide PA 6.6, black



Hole $\varnothing$ [mm]	Length $l$ [mm]	Grip range $s$ [mm]	Head		Removability	Article No.
			$\varnothing dk$ [mm]	Height $k$ [mm]		
3.0	9.75	1.75 - 5.0	5.5	1.5	easy	409 250 000 <sup>1</sup>
	16.8	4.0 - 12.0	5.5	1.5	easy	409 251 000 <sup>1</sup>
5.0	15.3	1.6 - 9.0	11.0	1.0	easy	409 252 000 <sup>1</sup>
	17.8	2.0 - 9.0	15.0	1.5	easy	409 253 000 <sup>1</sup>
6.35	22.5	1.0 - 18.0	12.6	2.5	easy	409 254 000
7.0	27.0	0.7 - 20.0	18.0	2.0	easy	409 255 000
	38.5	2.0 - 32.0	20.0	3.0	easy	409 256 000
	45.0	2.0 - 35.0	25.5	3.0	medium	409 267 000
7.2	22.1	0.7 - 11.0	18.0	2.0	medium	409 257 000
8.2	20.0	2.0 - 14.0	36.0	3.0	medium	409 258 000
10.0	28.0	1.5 - 20.0	21.5	4.0	difficult	409 259 000

<sup>1</sup> Dome head

Other designs available on request.