



Stavex® blind rivets



Benefits at a glance

- High shear and tensile strength at break for secure, vibration-proof connections
- Stainless steel version offers high corrosion resistance and is ideal for high-temperature applications
- Multi-range properties that cover a number of material strengths
- One fastener does the work of numerous fasteners offering a standard grip range, thereby reducing and simplifying storage needs
- Good hole filling properties compensate for hole tolerances and prevent sheet panels from shifting if the drilled holes are too big
- Positive stem retention - no damage, malfunctions or rattling from loose mandrels
- Large blind-side footprint
- Good load distribution on blind side
- Ideal for thin materials

Sample applications:

- Automotive engineering
- Commercial vehicle construction
- Household appliances
- Electronics
- Electrical engineering
- Lighting
- HVAC



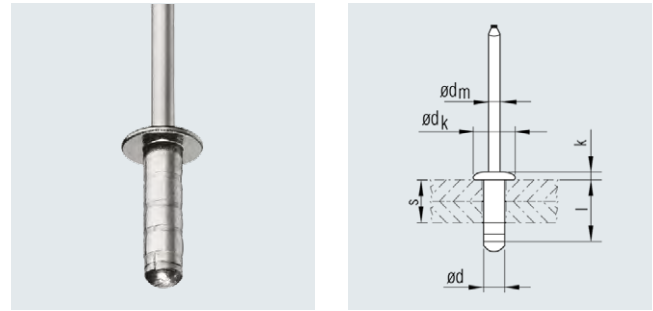
Stavex® BS01 blind rivets

Truss head

Material

Sleeve:
SAE 1008 steel, galvanised

Mandrel:
Steel, galvanised



Nominal \varnothing d [mm]	Bore \varnothing [mm]	Grip range s [mm]	Blind sleeve l max. [mm]	Blind rivet head		Mandrel \varnothing dm max. [mm]	Nominal strength at break		Article No.
				\varnothing dk max. [mm]	Height k max. [mm]		Shear [N]	Tensile [N]	
3.2	3.3 - 3.4	1.0 - 6.0	14.5	7.3	1.0	2.2	900	1170	341 910 000
4.0	4.1 - 4.2	2.0 - 8.0	16.0	8.2	1.4	2.9	1500	1800	341 911 000
4.8	4.9 - 5.0	1.5 - 5.1	12.2	10.1	1.6	3.1	2600	2880	341 912 000
		1.5 - 6.3	13.8	10.1	1.6	3.1	2600	2880	341 913 000
		1.5 - 9.0	17.1	10.1	1.6	3.1	2600	2880	341 914 000
		6.3 - 12.7	20.1	10.1	1.6	3.1	2600	2880	341 915 000
6.4	6.6	1.5 - 7.6	16.8	13.5	2.7	4.0	3100	3560	341 916 000

* Strengths at break relate to rivet failure.

Other designs available on request.



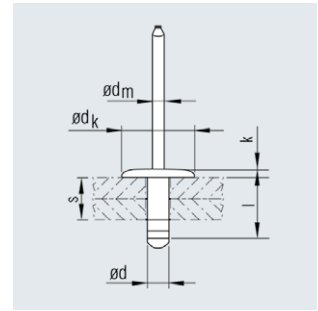
Stavex® BE34 blind rivets

Large truss head

Material

Sleeve:
SAE 1008 steel, galvanised

Mandrel:
Steel, galvanised



Nominal \varnothing d [mm]	Bore \varnothing [mm]	Grip range s [mm]	Blind sleeve l max. [mm]	Blind rivet head		Mandrel \varnothing dm max. [mm]	Nominal strength at break		Article No.
				dk max. [mm]	Height k max. [mm]		Shear [N]	Tensile [N]	
4.8	4.9 - 5.0	1.5 - 6.4	13.8	16.2	2.1	3.0	2600	2880	341 920 000
		1.5 - 9.0	17.1	16.2	2.1	3.0	2600	2880	341 921 000
		6.3 - 12.7	20.1	16.2	2.1	3.0	2600	2880	341 922 000

* Strengths at break relate to rivet failure.

Other designs available on request.



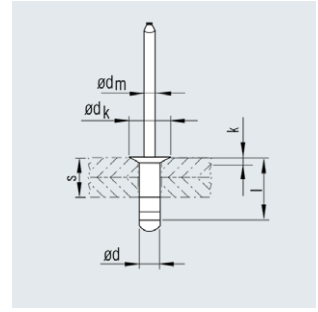
Stavex® BS04 blind rivets

Countersunk 120°

Material

Sleeve:
SAE 1008 steel, galvanised

Mandrel:
Steel, galvanised



Nominal \varnothing d [mm]	Bore \varnothing [mm]	Grip range s [mm]	Blind sleeve l max. [mm]	Blind rivet head		Mandrel \varnothing dm max. [mm]	Nominal strength at break		Article No.
				\varnothing dk max. [mm]	Height k max. [mm]		Shear [N]	Tensile [N]	
3.2	3.3 - 3.4	1.0 - 6.0	14.0	6.0	1.0	2.2	900	1170	341 930 000
4.8	4.9 - 5.0	2.4 - 6.4	13.8	8.9	1.4	3.0	2000	2890	341 931 000
		2.4 - 9.5	17.1	8.9	1.4	3.0	2000	2890	341 932 000
		6.4 - 12.8	20.1	8.9	1.4	3.0	2000	2890	341 933 000

* Strengths at break relate to rivet failure.

Other designs available on request.

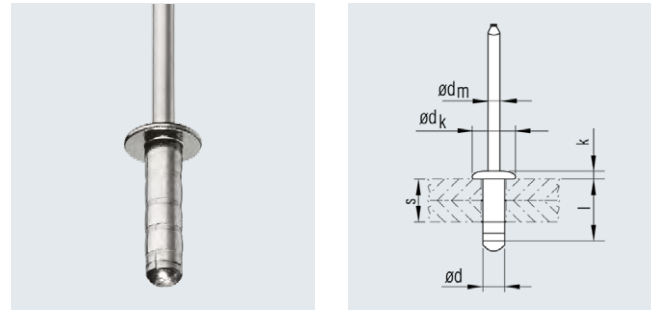


Stavex® BS11 blind rivets

Truss head

Material

Sleeve: Stainless steel 1.4567
 Mandrel: Stainless steel 1.4301/1.4541



Nominal \varnothing d [mm]	Bore \varnothing [mm]	Grip range s [mm]	Blind sleeve l max. [mm]	Blind rivet head		Mandrel \varnothing dm max. [mm]	Nominal strength at break		Article No.
				\varnothing dk max. [mm]	Height k max. [mm]		Shear [N]	Tensile [N]	
3.2	3.3 - 3.4	1.0 - 6.0	14.5	7.3	1.0	2.2	1600	1900	341 940 000
4.0	4.1 - 4.2	2.0 - 8.0	16.0	8.2	1.4	2.9	2400	3200	341 941 000
4.8	4.9 - 5.0	1.5 - 9.0	17.1	10.1	1.6	3.1	4100	4500	341 942 000

* Strengths at break relate to rivet failure.

Other designs available on request.