

Fastening Technology / Blind Rivets

TIFAS[®] Star Blind Rivets





Contents

			Page
TIFAS® Star blind rivets	Overview		3
	Dome head	Steel/steel	4
	Dome head	Aluminium/aluminium	5
	Large dome head	Aluminium/aluminium	6

TIFAS® Star blind rivets



TIFAS® Star blind rivets form three folding legs on the blind side on installation. These large-shaped folding legs evenly and sparingly distribute the resulting clamp force across the riveted material.

What's more, the large footprint created by the folding legs superbly prevents the rivet from being pulled all the way through very soft, porous or brittle components. The captive mandrel prevents setting errors or rattles.

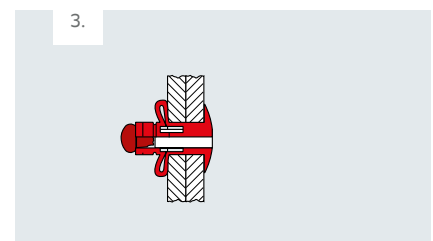
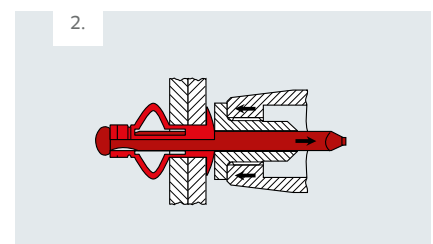
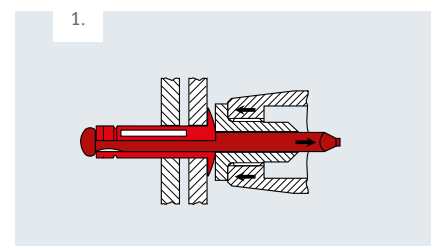
The unique design of the TIFAS® Star makes it capable of compensating for oversized or irregular bore diameters.

Also available in steel or aluminium with large head.

TIFAS® Star blind rivets are perfectly suited for the automotive sector, e.g. plastic panelling, bodywork components and vehicle interiors, but also for every other application that is especially soft, brittle, easily deformed, or porous.

Benefits at a glance

- Ideal for hard/soft connections
- Large blind-side footprint for ideal load distribution
- Generous drill hole tolerances
- Quick and secure installation
- Permanent secure fixing
- Heatless installation means component will not warp.
- Eliminates extensive refinishing
- Fastens different types of material, such as metal or plastic
- Ideal for lightweight constructions
- Folding legs form a very large blind-side footprint
- Distributes the contact load on the rear material and provides high pull out resistance
- Multi-range properties - covers numerous areas of material strength
- Securely retained mandrel head



Applications

- General industry
- Automotive industry
- Construction industry
- Bodywork and vehicle manufacture
- Plastics industry



TIFAS® Star blind rivets

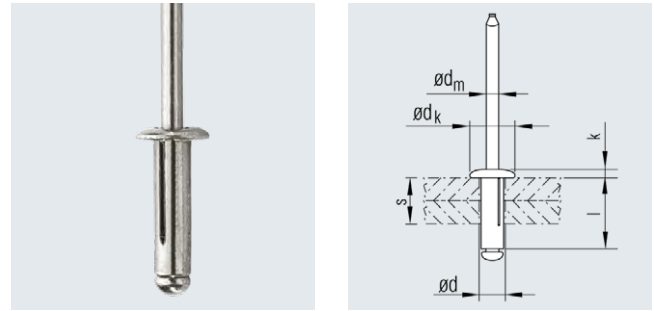


Dome Head

Material

Sleeve
Steel, galvanised,
passivated

Mandrel
Steel, galvanised



Nominal \varnothing d [mm]	Bore \varnothing [mm]	Grip range s [mm]	Blind sleeve $l \pm 0.5$ [mm]	Blind rivet head		Mandrel \varnothing d_m nom. [mm]	Nominal strength at break*		Article No.
				\varnothing $dk \pm 0.3$ [mm]	Height $k \pm 0.3$ [mm]		Shear N	Tensile N	
4.8	5.0 - 5.2	1.0 - 6.4	17.2	9.8	1.8	2.9	2000	2500	424 870 000
		3.0 - 8.5	19.5	9.8	1.8	2.9	2000	2500	424 871 000

* Strengths at break relate to rivet failure.

Other designs available on request.

TIFAS® Star blind rivets



Dome Head

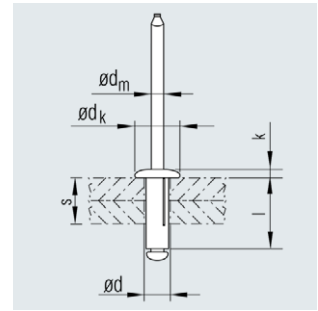
Material

Sleeve

Aluminium AlMg 2.0/2.5

Mandrel

Aluminium AlMg 2.0/2.5



Nominal \varnothing d [mm]	Bore \varnothing [mm]	Grip range s [mm]	Blind sleeve l ± 0.5 [mm]	Blind rivet head		Mandrel \varnothing dm nom. [mm]	Nominal strength at break*		Article No.
				\varnothing dk ± 0.3 [mm]	Height k ± 0.2 [mm]		Shear N	Tensile N	
4.0	4.2 - 4.5	1.0 - 3.0	13.6	8.0	1.4	2.3	540	830	424 630 000
		1.0 - 7.0	18.8	8.0	1.4	2.3	540	830	424 631 000
		5.0 - 12.0	24.8	8.0	1.4	2.3	540	830	424 632 000
4.8	5.0 - 5.3	1.0 - 4.0	15.3	9.8	1.8	2.9	800	1070	424 634 000
		1.0 - 6.3	17.5	9.8	1.8	2.9	800	1070	424 635 000
		1.0 - 9.0	20.5	9.8	1.8	2.9	800	1070	424 636 000
		4.0 - 12.0	24.0	9.8	1.8	2.9	800	1070	424 637 000
		8.0 - 16.0	28.0	9.8	1.8	2.9	800	1070	424 638 000
		11.0 - 19.0	31.0	9.8	1.8	2.9	800	1070	424 639 000

* Strengths at break relate to rivet failure.

Other designs available on request.

TIFAS® Star Blind Rivets



Large dome head

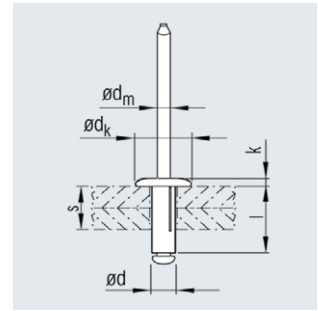
Material

Sleeve

Aluminium AlMg 2.0/2.5

Mandrel

Aluminium AlMg 2.0/2.5



Nominal \varnothing d [mm]	Bore \varnothing [mm]	Grip range s [mm]	Blind sleeve l ± 0.5 [mm]	Blind rivet head		Mandrel \varnothing d _m nom. [mm]	Nominal strength at break*		Article No.
				\varnothing dk ± 0.3 [mm]	Height k ± 0.3 [mm]		Shear N	Tensile N	
4.8	5.0 - 5.3	1.0 - 4.0	15.3	14.0	2.0	2.9	800	1000	424 640 000
		1.0 - 4.0	15.3	15.9	2.0	2.9	800	1000	424 645 000
		1.0 - 6.3	17.5	14.0	2.0	2.9	800	1000	424 641 000
		1.0 - 9.0	20.5	14.0	2.0	2.9	800	1000	424 642 000
		1.0 - 9.0	20.5	15.9	2.0	2.9	800	1000	424 646 000
		4.0 - 12.0	24.0	14.0	2.0	2.9	800	1000	424 643 000
		4.0 - 12.0	24.0	15.9	2.0	2.9	800	1000	424 647 000

* Strengths at break relate to rivet failure.

Other designs available on request.