





Captive® self-clinching fasteners

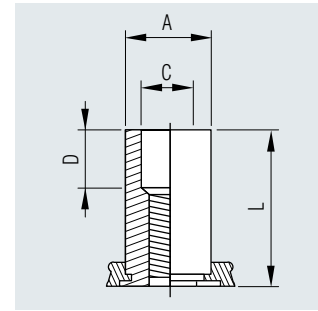
Self-clinching standoffs for metal

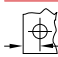
Through-hole

Material

 Zinc-plated steel (CFSO series)
Suitable for sheet hardness HRB 80 or less

 A2 stainless steel, 300 series, passivated (CFSOS series)
Suitable for sheet hardness HRB 70 or less



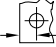
Thread size	Bore \varnothing	Material thickness	L	A	SW	C	D		Steel	Stainless steel				
									Description	Article No.	Description	Article No.		
	+0.08	+0.05	+0.00											
	-0.00	-0.13	-0.13	-0.13	nom	± 0.13	± 0.25	min						
	[mm]	[mm]	[mm]	[mm]	[mm]	[mm]	[mm]	[mm]						
M 3	4.22	1.0	3.0	4.2	4.8	3.2	0	6.0	CFSO M 3-3	358 330 000	CFSOS M 3-3	-		
			3.5	4.2	4.8	3.2	0	6.0	CFSO M 3-3.5	358 326 000	CFSOS M 3-3.5	-		
			4.0	4.2	4.8	3.2	0	6.0	CFSO M 3-4	358 331 000	CFSOS M 3-4	358 381 000		
			4.5	4.2	4.8	3.2	0	6.0	CFSO M 3-4.5	358 321 000	CFSOS M 3-4.5	-		
			5.0	4.2	4.8	3.2	0	6.0	CFSO M 3-5	358 337 000	CFSOS M 3-5	358 379 000		
			6.0	4.2	4.8	3.2	0	6.0	CFSO M 3-6	358 332 000	CFSOS M 3-6	358 382 000		
			7.0	4.2	4.8	3.2	0	6.0	CFSO M 3-7	358 322 000	CFSOS M 3-7	-		
			8.0	4.2	4.8	3.2	0	6.0	CFSO M 3-8	358 333 000	CFSOS M 3-8	358 383 000		
			10.0	4.2	4.8	3.2	4.0	6.0	CFSO M 3-10	358 334 000	CFSOS M 3-10	358 385 000		
			12.0	4.2	4.8	3.2	4.0	6.0	CFSO M 3-12	358 335 000	CFSOS M 3-12	358 380 000		
			14.0	4.2	4.8	3.2	4.0	6.0	CFSO M 3-14	358 336 000	CFSOS M 3-14	-		
			16.0	4.2	4.8	3.2	8.0	6.0	CFSO M 3-16	-	CFSOS M 3-16	-		
			18.0	4.2	4.8	3.2	8.0	6.0	CFSO M 3-18	-	CFSOS M 3-18	-		
			5.41	1.0	3.0	5.39	6.4	3.2	0	6.8	CFSO3.5 M 3-3	358 340 000	CFSOS3.5 M 3-3	-
					4.0	5.39	6.4	3.2	0	6.8	CFSO3.5 M 3-4	358 341 000	CFSOS3.5 M 3-4	-
					5.0	5.39	6.4	3.2	0	6.8	CFSO3.5 M 3-5	358 342 000	CFSOS3.5 M 3-5	-
					6.0	5.39	6.4	3.2	0	6.8	CFSO3.5 M 3-6	358 343 000	CFSOS3.5 M 3-6	358 391 000
					8.0	5.39	6.4	3.2	0	6.8	CFSO3.5 M 3-8	358 344 000	CFSOS3.5 M 3-8	358 390 000
9.0	5.39	6.4			3.2	0	6.8	CFSO3.5 M 3-9	358 350 000	CFSOS3.5 M 3-9	-			
10.0	5.39	6.4			3.2	4.0	6.8	CFSO3.5 M 3-10	358 345 000	CFSOS3.5 M 3-10	358 393 000			
12.0	5.39	6.4			3.2	4.0	6.8	CFSO3.5 M 3-12	358 346 000	CFSOS3.5 M 3-12	358 394 000			
14.0	5.39	6.4			3.2	4.0	6.8	CFSO3.5 M 3-14	358 347 000	CFSOS3.5 M 3-14	-			
16.0	5.39	6.4			3.2	8.0	6.8	CFSO3.5 M 3-16	358 339 000	CFSOS3.5 M 3-16	-			
18.0	5.39	6.4	3.2	8.0	6.8	CFSO3.5 M 3-18	358 348 000	CFSOS3.5 M 3-18	-					
			5.39	6.4	3.2	11.0	6.8	CFSO3.5 M 3-22	358 349 000	CFSOS3.5 M 3-22	-			

Continued on next page



Captive® self-clinching fasteners

Cont'd

Thread size	Bore ϕ	Material thickness	L	A	SW	C	D		Steel		Stainless steel	
									Description	Article No.	Description	Article No.
	+0.08	ness	+0.05	+0.00								
	-0.00	min	-0.13	-0.13	nom	± 0.13	± 0.25	min				
	[mm]	[mm]	[mm]	[mm]	[mm]	[mm]	[mm]	[mm]				
M 4	7.14	1.27	3.0	7.12	7.9	4.8	0	8.0	CFSO M 4-3	358 359 000	CFSOS M 4-3	-
			4.0	7.12	7.9	4.8	0	8.0	CFSO M 4-4	358 351 000	CFSOS M 4-4	358 373 000
			4.5	7.12	7.9	4.8	0	8.0	CFSO M 4-4.5	358 366 000	CFSOS M 4-4.5	-
			6.0	7.12	7.9	4.8	0	8.0	CFSO M 4-6	358 352 000	CFSOS M 4-6	358 384 000
			6.5	7.12	7.9	4.8	0	8.0	CFSO M 4 - 6.5	358 319 000	CFSOS M 4-6.5	-
			7.0	7.12	7.9	4.8	0	8.0	CFSO M 4-7	358 356 000	CFSOS M 4-7	-
			8.0	7.12	7.9	4.8	0	8.0	CFSO M 4-8	358 353 000	CFSOS M 4-8	358 389 000
			10.0	7.12	7.9	4.8	4.0	8.0	CFSO M 4-10	358 354 000	CFSOS M 4-10	358 374 000
			12.0	7.12	7.9	4.8	4.0	8.0	CFSO M 4-12	358 355 000	CFSOS M 4-12	-
			14.0	7.12	7.9	4.8	4.0	8.0	CFSO M 4-14	-	CFSOS M 4-14	-
			16.0	7.12	7.9	4.8	8.0	8.0	CFSO M 4-16	358 361 000	CFSOS M 4-16	358 392 000
			18.0	7.12	7.9	4.8	8.0	8.0	CFSO M 4-18	358 358 000	CFSOS M 4-18	-
			20.0	7.12	7.9	4.8	8.0	8.0	CFSO M 4-20	358 357 000	CFSOS M 4-20	-
			22.0	7.12	7.9	4.8	11.0	8.0	CFSO M 4-22	358 360 000	CFSOS M 4-22	-
			25.0	7.12	7.9	4.8	11.0	8.0	CFSO M 4-25	358 372 000	CFSOS M 4-25	-
M 5	7.14	1.27	3.0	7.12	7.9	5.35	0	8.0	CFSO M 5-3	-	CFSOS M 5-3	-
			4.0	7.12	7.9	5.35	0	8.0	CFSO M 5-4	358 362 000	CFSOS M 5-4	358 378 000
			6.0	7.12	7.9	5.35	0	8.0	CFSO M 5-6	358 363 000	CFSOS M 5-6	358 388 000
			8.0	7.12	7.9	5.35	0	8.0	CFSO M 5-8	358 364 000	CFSOS M 5-8	358 387 000
			10.0	7.12	7.9	5.35	4.0	8.0	CFSO M 5-10	358 365 000	CFSOS M 5-10	-
			12.0	7.12	7.9	5.35	4.0	8.0	CFSO M 5-12	358 371 000	CFSOS M 5-12	-
			14.0	7.12	7.9	5.35	4.0	8.0	CFSO M 5-14	358 367 000	CFSOS M 5-14	-
			16.0	7.12	7.9	5.35	8.0	8.0	CFSO M 5-16	358 368 000	CFSOS M 5-16	-
			18.0	7.12	7.9	5.35	8.0	8.0	CFSO M 5-18	-	CFSOS M 5-18	-
			20.0	7.12	7.9	5.35	8.0	8.0	CFSO M 5-20	-	CFSOS M 5-20	358 386 000
			22.0	7.12	7.9	5.35	11.0	8.0	CFSO M 5-22	358 301 000	CFSOS M 5-22	-
			25.0	7.12	7.9	5.35	11.0	8.0	CFSO M 5-25	358 370 000	CFSOS M 5-25	-

Hole ϕ anvil = Dimensions "A" +0.10/+0.18 mm.

For technical specifications, see page 59.

Captive® self-clinching fasteners



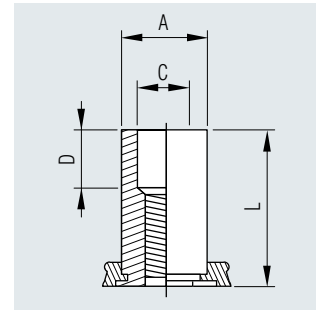
Self-clinching standoffs for metal

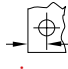
Through-hole

Material

Aluminium (CFSOA series)

Suitable for sheet hardness HRB 50 or less



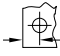
Thread size	Bore \varnothing +0.08 -0.00 [mm]	Material thickness min [mm]	L +0.05 -0.13 [mm]	A +0.00 -0.13 [mm]	SW nom [mm]	C ± 0.13 [mm]	D ± 0.25 [mm]	 min [mm]	Aluminium	Article No.		
									Description			
M 3	4.22	1.0	3.0	4.2	4.8	3.2	0	6.0	CFSOA M 3-3	-		
			3.5	4.2	4.8	3.2	0	6.0	CFSOA M 3-3.5	-		
			4.0	4.2	4.8	3.2	0	6.0	CFSOA M 3-4	-		
			4.5	4.2	4.8	3.2	0	6.0	CFSOA M 3-4.5	-		
			5.0	4.2	4.8	3.2	0	6.0	CFSOA M 3-5	-		
			6.0	4.2	4.8	3.2	0	6.0	CFSOA M 3-6	-		
			7.0	4.2	4.8	3.2	0	6.0	CFSOA M 3-7	-		
			8.0	4.2	4.8	3.2	0	6.0	CFSOA M 3-8	-		
			10.0	4.2	4.8	3.2	4.0	6.0	CFSOA M 3-10	-		
			12.0	4.2	4.8	3.2	4.0	6.0	CFSOA M 3-12	-		
			14.0	4.2	4.8	3.2	4.0	6.0	CFSOA M 3-14	-		
			16.0	4.2	4.8	3.2	8.0	6.0	CFSOA M 3-16	-		
			18.0	4.2	4.8	3.2	8.0	6.0	CFSOA M 3-18	-		
			5.41	1.0	3.0	5.39	6.4	3.2	0	6.8	CFSOA3.5 M 3-3	-
					4.0	5.39	6.4	3.2	0	6.8	CFSOA3.5 M 3-4	-
					5.0	5.39	6.4	3.2	0	6.8	CFSOA3.5 M 3-5	-
					6.0	5.39	6.4	3.2	0	6.8	CFSOA3.5 M 3-6	-
8.0	5.39	6.4			3.2	0	6.8	CFSOA3.5 M 3-8	-			
9.0	5.39	6.4			3.2	0	6.8	CFSOA3.5 M 3-9	-			
10.0	5.39	6.4			3.2	4.0	6.8	CFSOA3.5 M 3-10	-			
12.0	5.39	6.4			3.2	4.0	6.8	CFSOA3.5 M 3-12	-			
14.0	5.39	6.4			3.2	4.0	6.8	CFSOA3.5 M 3-14	-			
16.0	5.39	6.4			3.2	8.0	6.8	CFSOA3.5 M 3-16	-			
18.0	5.39	6.4	3.2	8.0	6.8	CFSOA3.5 M 3-18	-					
22.0	5.39	6.4	3.2	11.0	6.8	CFSOA3.5 M 3-22	-					

Continued on next page



Captive® self-clinching fasteners

Cont'd

Thread size	Bore ø +0.08 -0.00 [mm]	Material thickness min [mm]	L +0.05 -0.13 [mm]	A +0.00 -0.13 [mm]	SW nom [mm]	C ± 0.13 [mm]	D ± 0.25 [mm]	 min [mm]	Steel	
									Description	Article No.
M 4	7.14	1.27	3.0	7.12	7.9	4.8	0	8.0	CFSOA M 4-3	-
			4.0	7.12	7.9	4.8	0	8.0	CFSOA M 4-4	-
			4.5	7.12	7.9	4.8	0	8.0	CFSOA M 4-4.5	-
			6.0	7.12	7.9	4.8	0	8.0	CFSOA M 4-6	358 395 000
			6.5	7.12	7.9	4.8	0	8.0	CFSOA M 4-6.5	-
			7.0	7.12	7.9	4.8	0	8.0	CFSOA M 4-7	-
			8.0	7.12	7.9	4.8	0	8.0	CFSOA M 4-8	-
			10.0	7.12	7.9	4.8	4.0	8.0	CFSOA M 4-10	-
			12.0	7.12	7.9	4.8	4.0	8.0	CFSOA M 4-12	-
			14.0	7.12	7.9	4.8	4.0	8.0	CFSOA M 4-14	-
			16.0	7.12	7.9	4.8	8.0	8.0	CFSOA M 4-16	-
			18.0	7.12	7.9	4.8	8.0	8.0	CFSOA M 4-18	-
			20.0	7.12	7.9	4.8	8.0	8.0	CFSOA M 4-20	-
			22.0	7.12	7.9	4.8	11.0	8.0	CFSOA M 4-22	-
25.0	7.12	7.9	4.8	11.0	8.0	CFSOA M 4-25	-			
M 5	7.14	1.27	3.0	7.12	7.9	5.35	0	8.0	CFSOA M 5-3	-
			4.0	7.12	7.9	5.35	0	8.0	CFSOA M 5-4	-
			6.0	7.12	7.9	5.35	0	8.0	CFSOA M 5-6	-
			8.0	7.12	7.9	5.35	0	8.0	CFSOA M 5-8	-
			10.0	7.12	7.9	5.35	4.0	8.0	CFSOA M 5-10	-
			12.0	7.12	7.9	5.35	4.0	8.0	CFSOA M 5-12	-
			14.0	7.12	7.9	5.35	4.0	8.0	CFSOA M 5-14	-
			16.0	7.12	7.9	5.35	8.0	8.0	CFSOA M 5-16	-
			18.0	7.12	7.9	5.35	8.0	8.0	CFSOA M 5-18	-
			20.0	7.12	7.9	5.35	8.0	8.0	CFSOA M 5-20	-
			22.0	7.12	7.9	5.35	11.0	8.0	CFSOA M 5-22	-
25.0	7.12	7.9	5.35	11.0	8.0	CFSOA M 5-25	-			

Hole ø anvil = Dimension "A" +0.10/+0.18 mm.

For technical specifications, see page 59.



Captive® self-clinching fasteners

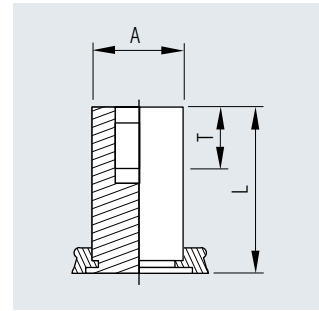
Self-clinching standoffs for metal

Through-threaded

Material

Zinc-plated steel (CFBSO series)
Suitable for sheet hardness HRB 80 or less

A2 stainless steel, 300 series, passivated (CFBSOS series)
Suitable for sheet hardness HRB 70 or less



Thread size	Bore ø	Material thickness	L	A	SW	T ¹		Steel		Stainless steel		
								Description	Article No.	Description	Article No.	
M 3	4.22	1.0	6.0	+0.05 -0.13	+0.00 -0.13	nom	min	min				
			[mm]	[mm]	[mm]	[mm]	[mm]	[mm]				
			8.0	4.2	4.8	4.0	6.0	CFBSO M 3-8	358 403 000	CFBSOS M 3-8	358 433 000	
			10.0	4.2	4.8	4.0	6.0	CFBSO M 3-10	358 404 000	CFBSOS M 3-10	358 434 000	
			12.0	4.2	4.8	5.0	6.0	CFBSO M 3-12	358 405 000	CFBSOS M 3-12	358 435 000	
			14.0	4.2	4.8	6.5	6.0	CFBSO M 3-14	358 406 000	CFBSOS M 3-14	358 436 000	
			16.0	4.2	4.8	6.5	6.0	CFBSO M 3-16	358 407 000	CFBSOS M 3-16	358 432 000	
			18.0	4.2	4.8	9.5	6.0	CFBSO M 3-18	358 408 000	CFBSOS M 3-18	358 438 000	
			20.0	4.2	4.8	9.5	6.0	CFBSO M 3-20	358 409 000	CFBSOS M 3-20	358 460 000	
			22.0	4.2	4.8	9.5	6.0	CFBSO M 3-22	358 410 000	CFBSOS M 3-22	-	
	25.0	4.2	4.8	9.5	6.0	CFBSO M 3-25	358 421 000	CFBSOS M 3-25	358 437 000			
	5.41	1.0	1.0	6.0	5.39	6.4	3.2	6.8	CFBSO3.5 M 3-6	358 412 000	CFBSOS3.5 M 3-6	358 457 000
				8.0	5.39	6.4	4.0	6.8	CFBSO3.5 M 3-8	358 413 000	CFBSOS3.5 M 3-8	358 439 000
				9.0	5.39	6.4	4.0	6.8	CFBSO3.5 M 3-9	358 401 000	CFBSOS3.5 M 3-9	-
				10.0	5.39	6.4	4.0	6.8	CFBSO3.5 M 3-10	358 414 000	CFBSOS3.5 M 3-10	358 440 000
				11.0	5.39	6.4	4.0	6.8	CFBSO3.5 M 3-11	358 411 000	CFBSOS3.5 M 3-11	-
				12.0	5.39	6.4	5.0	6.8	CFBSO3.5 M 3-12	358 415 000	CFBSOS3.5 M 3-12	358 441 000
				14.0	5.39	6.4	6.5	6.8	CFBSO3.5 M 3-14	358 416 000	CFBSOS3.5 M 3-14	358 442 000
				16.0	5.39	6.4	6.5	6.8	CFBSO3.5 M 3-16	358 417 000	CFBSOS3.5 M 3-16	358 443 000
				18.0	5.39	6.4	9.5	6.8	CFBSO3.5 M 3-18	358 418 000	CFBSOS3.5 M 3-18	358 458 000
20.0				5.39	6.4	9.5	6.8	CFBSO3.5 M 3-20	358 419 000	CFBSOS3.5 M 3-20	-	
22.0	5.39	6.4	9.5	6.8	CFBSO3.5 M 3-22	358 420 000	CFBSOS3.5 M 3-22	-				
25.0	5.39	6.4	9.5	6.8	CFBSO3.5 M 3-25	358 448 000	CFBSOS3.5 M 3-25	-				
30.0	5.39	6.4	9.5	6.8	CFBSO3.5 M 3-30	358 449 000	CFBSOS3.5 M 3-30	-				

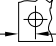
¹ T = Thread length

Continued on next page



Captive® self-clinching fasteners

Cont'd

Thread size	Bore ø	Material thickness	L	A	SW	T ¹		Steel		Stainless steel	
								Description	Article No.	Description	Article No.
	+0.08		+0.05	+0.00							
	-0.00	min	-0.13	-0.13	nom	min	min				
	[mm]	[mm]	[mm]	[mm]	[mm]	[mm]	[mm]				
M 4	7.14	1.27	6.0	7.12	7.9	3.2	8.0	CFBSO M 4-6	358 451 000	CFBSOS M 4-6	-
			8.0	7.12	7.9	4.0	8.0	CFBSO M 4-8	358 423 000	CFBSOS M 4-8	358 473 000
			10.0	7.12	7.9	4.0	8.0	CFBSO M 4-10	358 424 000	CFBSOS M 4-10	358 474 000
			11.5	7.12	7.9	4.0	8.0	CFBSO M 4-11.5	358 422 000	CFBSOS M 4-11.5	-
			12.0	7.12	7.9	5.0	8.0	CFBSO M 4-12	358 425 000	CFBSOS M 4-12	358 475 000
			14.0	7.12	7.9	6.5	8.0	CFBSO M 4-14	358 426 000	CFBSOS M 4-14	358 476 000
			16.0	7.12	7.9	6.5	8.0	CFBSO M 4-16	358 427 000	CFBSOS M 4-16	358 477 000
			18.0	7.12	7.9	9.5	8.0	CFBSO M 4-18	358 428 000	CFBSOS M 4-18	358 478 000
			20.0	7.12	7.9	9.5	8.0	CFBSO M 4-20	358 429 000	CFBSOS M 4-20	-
			22.0	7.12	7.9	9.5	8.0	CFBSO M 4-22	358 430 000	CFBSOS M 4-22	358 454 000
			25.0	7.12	7.9	9.5	8.0	CFBSO M 4-25	358 431 000	CFBSOS M 4-25	358 481 000
M 5	7.14	1.27	6.0	7.12	7.9	3.2	8.0	CFBSO M 5-6	-	CFBSOS M 5-6	-
			8.0	7.12	7.9	4.0	8.0	CFBSO M 5-8	-	CFBSOS M 5-8	-
			10.0	7.12	7.9	4.0	8.0	CFBSO M 5-10	358 444 000	CFBSOS M 5-10	-
			12.0	7.12	7.9	5.0	8.0	CFBSO M 5-12	358 445 000	CFBSOS M 5-12	358 484 000
			14.0	7.12	7.9	6.5	8.0	CFBSO M 5-14	-	CFBSOS M 5-14	-
			16.0	7.12	7.9	6.5	8.0	CFBSO M 5-16	358 447 000	CFBSOS M 5-16	358 486 000
			18.0	7.12	7.9	9.5	8.0	CFBSO M 5-18	358 446 000	CFBSOS M 5-18	358 487 000
			20.0	7.12	7.9	9.5	8.0	CFBSO M 5-20	-	CFBSOS M 5-20	-
			22.0	7.12	7.9	9.5	8.0	CFBSO M 5-22	358 450 000	CFBSOS M 5-22	-
						25.0	7.12	7.9	9.5	8.0	CFBSO M 5-25

¹ Thread length

Hole ø anvil = Dimension "A" +0.10/+0.18 mm.

For technical specifications, see page 621.



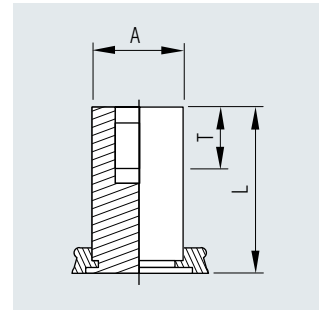
Captive® self-clinching fasteners

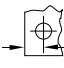
Self-clinching standoffs for metal

Through-threaded

Material

Aluminium (CFBSOA series)
Suitable for sheet hardness HRB 50 or less



Thread size	Bore ϕ +0.08 -0.00 [mm]	Material thickness min [mm]	L +0.05 -0.13 [mm]	A +0.00 -0.13 [mm]	SW nom [mm]	T ¹ min [mm]		Aluminium			
								Description	Article No.		
M 3	4.22	1.0	6.0	4.2	4.8	3.2	6.0	CFBSOA M 3-6	-		
			8.0	4.2	4.8	4.0	6.0	CFBSOA M 3-8	-		
			10.0	4.2	4.8	4.0	6.0	CFBSOA M 3-10	-		
			12.0	4.2	4.8	5.0	6.0	CFBSOA M 3-12	-		
			14.0	4.2	4.8	6.5	6.0	CFBSOA M 3-14	-		
			16.0	4.2	4.8	6.5	6.0	CFBSOA M 3-16	-		
			18.0	4.2	4.8	9.5	6.0	CFBSOA M 3-18	358 453 000		
			20.0	4.2	4.8	9.5	6.0	CFBSOA M 3-20	-		
			22.0	4.2	4.8	9.5	6.0	CFBSOA M 3-22	-		
			25.0	4.2	4.8	9.5	6.0	CFBSOA M 3-25	-		
			5.41	1.0	6.0	5.39	6.4	3.2	6.8	CFBSOA3.5 M 3-6	-
					8.0	5.39	6.4	4.0	6.8	CFBSOA3.5 M 3-8	-
					9.0	5.39	6.4	4.0	6.8	CFBSOA3.5 M 3-9	-
					10.0	5.39	6.4	4.0	6.8	CFBSOA3.5 M 3-10	-
11.0	5.39	6.4			4.0	6.8	CFBSOA3.5 M 3-11	-			
12.0	5.39	6.4			5.0	6.8	CFBSOA3.5 M 3-12	358 461 000			
14.0	5.39	6.4			6.5	6.8	CFBSOA3.5 M 3-14	358 462 000			
16.0	5.39	6.4			6.5	6.8	CFBSOA3.5 M 3-16	358 463 000			
18.0	5.39	6.4			9.5	6.8	CFBSOA3.5 M 3-18	358 464 000			
20.0	5.39	6.4			9.5	6.8	CFBSOA3.5 M 3-20	-			
22.0	5.39	6.4	9.5	6.8	CFBSOA3.5 M 3-22	358 455 000					
25.0	5.39	6.4	9.5	6.8	CFBSOA3.5 M 3-25	-					
30.0	5.39	6.4	9.5	6.8	CFBSOA3.5 M 3-30	-					

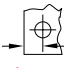
¹ T = Thread length

Continued on next page



Captive® self-clinching fasteners

Cont'd

Thread size	Bore ϕ +0.08 -0.00 [mm]	Material thickness min [mm]	L +0.05 -0.13 [mm]	A +0.00 -0.13 [mm]	SW nom [mm]	T ¹ min [mm]	 min [mm]	Aluminium	
								Description	Article No.
M 4	7.14	1.27	6.0	7.12	7.9	3.2	8.0	CFBSOA M 4-6	-
			8.0	7.12	7.9	4.0	8.0	CFBSOA M 4-8	-
			10.0	7.12	7.9	4.0	8.0	CFBSOA M 4-10	-
			11.5	7.12	7.9	4.0	8.0	CFBSOA M 4-11.5	-
			12.0	7.12	7.9	5.0	8.0	CFBSOA M 4-12	-
			14.0	7.12	7.9	6.5	8.0	CFBSOA M 4-14	358 456 000
			16.0	7.12	7.9	6.5	8.0	CFBSOA M 4-16	-
			18.0	7.12	7.9	9.5	8.0	CFBSOA M 4-18	-
			20.0	7.12	7.9	9.5	8.0	CFBSOA M 4-20	-
			22.0	7.12	7.9	9.5	8.0	CFBSOA M 4-22	-
			25.0	7.12	7.9	9.5	8.0	CFBSOA M 4-25	-
M 5	7.14	1.27	6.0	7.12	7.9	3.2	8.0	CFBSOA M 5-6	-
			8.0	7.12	7.9	4.0	8.0	CFBSOA M 5-8	-
			10.0	7.12	7.9	4.0	8.0	CFBSOA M 5-10	-
			12.0	7.12	7.9	5.0	8.0	CFBSOA M 5-12	-
			14.0	7.12	7.9	6.5	8.0	CFBSOA M 5-14	-
			16.0	7.12	7.9	6.5	8.0	CFBSOA M 5-16	-
			18.0	7.12	7.9	9.5	8.0	CFBSOA M 5-18	-
			20.0	7.12	7.9	9.5	8.0	CFBSOA M 5-20	-
			22.0	7.12	7.9	9.5	8.0	CFBSOA M 5-22	-
						25.0	7.12	7.9	9.5

¹ T = Thread length

Hole ϕ anvil = Dimension "A" +0.10/+0.18 mm.


For technical specifications, see page 59.




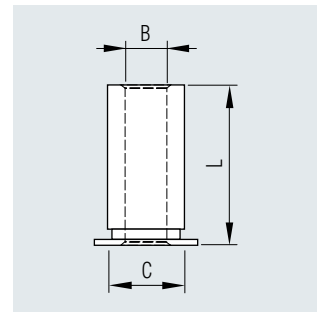
Captive® self-clinching fasteners

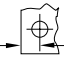
Self-clinching standoffs for metal

Material

 Zinc-plated steel (CFSO series)
Suitable for sheet hardness HRB 80 or less

 A2 stainless steel, 300 series, passivated (CFSOS series)
Suitable for sheet hardness HRB 70 or less



Hole ø B	Bore ø +0.08 -0.00	Material thickness min	L +0.05 -0.13	C +0.00 -0.13	SW	 min	Steel		Stainless steel	
							Description	Article No.	Description	Article No.
[mm]	[mm]	[mm]	[mm]	[mm]	[mm]	[mm]				
3.1	4.22	1.02	3.0	4.19	4.8	6.0	CFSO 43.1-3	-	CFSOS 43.1-3	-
			4.0	4.19	4.8	6.0	CFSO 43.1-4	358 947 000	CFSOS 43.1-4	-
			6.0	4.19	4.8	6.0	CFSO 43.1-6	358 957 000	CFSOS 43.1-6	-
			8.0	4.19	4.8	6.0	CFSO 43.1-8	-	CFSOS 43.1-8	-
			10.0	4.19	4.8	6.0	CFSO 43.1-10	-	CFSOS 43.1-10	-
			12.0	4.19	4.8	6.0	CFSO 43.1-12	-	CFSOS 43.1-12	-
			14.0	4.19	4.8	6.0	CFSO 43.1-14	-	CFSOS 43.1-14	-
			16.0	4.19	4.8	6.0	CFSO 43.1-16	-	CFSOS 43.1-16	-
			18.0	4.19	4.8	6.0	CFSO 43.1-18	-	CFSOS 43.1-18	-
	20.0	4.19	4.8	6.0	CFSO 43.1-20	-	CFSOS 43.1-20	-		
	5.41	1.02	3.0	5.38	6.4	6.8	CFSO 63.1-3	-	CFSOS 63.1-3	-
			4.0	5.38	6.4	6.8	CFSO 63.1-4	-	CFSOS 63.1-4	-
			6.0	5.38	6.4	6.8	CFSO 63.1-6	358 963 000	CFSOS 63.1-6	-
			8.0	5.38	6.4	6.8	CFSO 63.1-8	-	CFSOS 63.1-8	-
			10.0	5.38	6.4	6.8	CFSO 63.1-10	-	CFSOS 63.1-10	-
			12.0	5.38	6.4	6.8	CFSO 63.1-12	-	CFSOS 63.1-12	-
			14.0	5.38	6.4	6.8	CFSO 63.1-14	-	CFSOS 63.1-14	-
			16.0	5.38	6.4	6.8	CFSO 63.1-16	-	CFSOS 63.1-16	-
18.0			5.38	6.4	6.8	CFSO 63.1-18	-	CFSOS 63.1-18	-	
3.6	5.41	1.02	3.0	5.38	6.4	6.8	CFSO 63.6-3	-	CFSOS 63.6-3	-
			4.0	5.38	6.4	6.8	CFSO 63.6-4	-	CFSOS 63.6-4	-
			6.0	5.38	6.4	6.8	CFSO 63.6-6	-	CFSOS 63.6-6	-
			8.0	5.38	6.4	6.8	CFSO 63.6-8	-	CFSOS 63.6-8	-
			10.0	5.38	6.4	6.8	CFSO 63.6-10	358 967 000	CFSOS 63.6-10	-
			12.0	5.38	6.4	6.8	CFSO 63.6-12	358 966 000	CFSOS 63.6-12	-
			14.0	5.38	6.4	6.8	CFSO 63.6-14	358 960 000	CFSOS 63.6-14	-
			16.0	5.38	6.4	6.8	CFSO 63.6-16	-	CFSOS 63.6-16	-
			18.0	5.38	6.4	6.8	CFSO 63.6-18	-	CFSOS 63.6-18	-
			20.0	5.38	6.4	6.8	CFSO 63.6-20	-	CFSOS 63.6-20	-

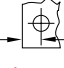
Hole ø anvil = Dimension "A" +0.10/+0.18 mm.

Continued on next page



Captive® self-clinching fasteners

Cont'd

Hole ø B	Bore ø +0.08 -0.00 [mm]	Material thickness min [mm]	L +0.05 -0.13 [mm]	C +0.00 -0.13 [mm]	SW [mm]	 min [mm]	Steel		Stainless steel	
							Description	Article No.	Description	Article No.
4.1	7.14	1.27	3.0	7.11	7.9	8.0	CFSO 84.1-3	-	CFSOS 84.1-3	-
			4.0	7.11	7.9	8.0	CFSO 84.1-4	-	CFSOS 84.1-4	-
			6.0	7.11	7.9	8.0	CFSO 84.1-6	-	CFSOS 84.1-6	-
			8.0	7.11	7.9	8.0	CFSO 84.1-8	358 672 000	CFSOS 84.1-8	-
			10.0	7.11	7.9	8.0	CFSO 84.1-10	-	CFSOS 84.1-10	-
			12.0	7.11	7.9	8.0	CFSO 84.1-12	-	CFSOS 84.1-12	-
			14.0	7.11	7.9	8.0	CFSO 84.1-14	-	CFSOS 84.1-14	-
			16.0	7.11	7.9	8.0	CFSO 84.1-16	-	CFSOS 84.1-16	-
			18.0	7.11	7.9	8.0	CFSO 84.1-18	358 679 000	CFSOS 84.1-18	-
			20.0	7.11	7.9	8.0	CFSO 84.1-20	-	CFSOS 84.1-20	-
5.1	7.14	1.27	3.0	7.11	7.9	8.0	CFSO 85.1-3	-	CFSOS 85.1-3	-
			4.0	7.11	7.9	8.0	CFSO 85.1-4	358 671 000	CFSOS 85.1-4	-
			6.0	7.11	7.9	8.0	CFSO 85.1-6	-	CFSOS 85.1-6	-
			8.0	7.11	7.9	8.0	CFSO 85.1-8	-	CFSOS 85.1-8	-
			10.0	7.11	7.9	8.0	CFSO 85.1-10	-	CFSOS 85.1-10	-
			12.0	7.11	7.9	8.0	CFSO 85.1-12	-	CFSOS 85.1-12	-
			14.0	7.11	7.9	8.0	CFSO 85.1-14	-	CFSOS 85.1-14	-
			16.0	7.11	7.9	8.0	CFSO 85.1-16	-	CFSOS 85.1-16	-
			18.0	7.11	7.9	8.0	CFSO 85.1-18	358 678 000	CFSOS 85.1-18	-
			20.0	7.11	7.9	8.0	CFSO 85.1-20	-	CFSOS 85.1-20	-

Hole ø anvil = Dimension "A" +0.10/+0.18 mm.

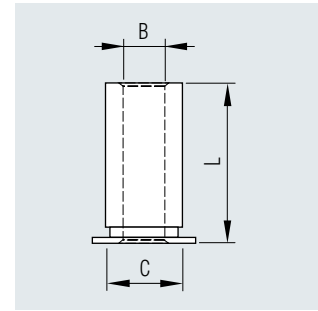


Captive® self-clinching fasteners

Self-clinching standoffs for metal

Material

Aluminium (CFSOA series)
Suitable for sheet hardness HRB 50 or less



Hole ϕ	Bore ϕ	Material	L	C	SW		Aluminium			
B	+0.08	thickness	+0.05	+0.00			Description	Article No.		
[mm]	-0.00	min	-0.13	-0.13	nom	min				
[mm]	[mm]	[mm]	[mm]	[mm]	[mm]	[mm]				
3.1	4.22	1.02	3.0	4.19	4.8	6.0	CFSOA 43.1-3	-		
			4.0	4.19	4.8	6.0	CFSOA 43.1-4	-		
			6.0	4.19	4.8	6.0	CFSOA 43.1-6	-		
			8.0	4.19	4.8	6.0	CFSOA 43.1-8	-		
			10.0	4.19	4.8	6.0	CFSOA 43.1-10	-		
			12.0	4.19	4.8	6.0	CFSOA 43.1-12	-		
			14.0	4.19	4.8	6.0	CFSOA 43.1-14	-		
			16.0	4.19	4.8	6.0	CFSOA 43.1-16	-		
			18.0	4.19	4.8	6.0	CFSOA 43.1-18	-		
			20.0	4.19	4.8	6.0	CFSOA 43.1-20	-		
			5.41	1.02	3.0	5.38	6.4	6.8	CFSOA 63.1-3	-
					4.0	5.38	6.4	6.8	CFSOA 63.1-4	-
					6.0	5.38	6.4	6.8	CFSOA 63.1-6	-
8.0	5.38	6.4			6.8	CFSOA 63.1-8	-			
10.0	5.38	6.4			6.8	CFSOA 63.1-10	-			
12.0	5.38	6.4			6.8	CFSOA 63.1-12	-			
14.0	5.38	6.4			6.8	CFSOA 63.1-14	-			
16.0	5.38	6.4			6.8	CFSOA 63.1-16	-			
18.0	5.38	6.4			6.8	CFSOA 63.1-18	-			
20.0	5.38	6.4			6.8	CFSOA 63.1-20	-			
3.6	5.41	1.02	3.0	5.38	6.4	6.8	CFSOA 63.6-3	-		
			4.0	5.38	6.4	6.8	CFSOA 63.6-4	-		
			6.0	5.38	6.4	6.8	CFSOA 63.6-6	-		
			8.0	5.38	6.4	6.8	CFSOA 63.6-8	-		
			10.0	5.38	6.4	6.8	CFSOA 63.6-10	-		
			12.0	5.38	6.4	6.8	CFSOA 63.6-12	-		
			14.0	5.38	6.4	6.8	CFSOA 63.6-14	-		
			16.0	5.38	6.4	6.8	CFSOA 63.6-16	-		
			18.0	5.38	6.4	6.8	CFSOA 63.6-18	-		
			20.0	5.38	6.4	6.8	CFSOA 63.6-20	-		

Hole ϕ anvil = Dimension "A" +0.10/+0.18 mm.

Continued on next page



Captive® self-clinching fasteners

Cont'd

Hole ø B	Bore ø +0.08 -0.00 [mm]	Material thickness min [mm]	L +0.05 -0.13 [mm]	C +0.00 -0.13 [mm]	SW		Aluminium	
					nom [mm]	min [mm]	Description	Article No.
4.1	7.14	1.27	3.0	7.11	7.9	8.0	CFSOA 84.1-3	-
			4.0	7.11	7.9	8.0	CFSOA 84.1-4	-
			6.0	7.11	7.9	8.0	CFSOA 84.1-6	-
			8.0	7.11	7.9	8.0	CFSOA 84.1-8	-
			10.0	7.11	7.9	8.0	CFSOA 84.1-10	-
			12.0	7.11	7.9	8.0	CFSOA 84.1-12	-
			14.0	7.11	7.9	8.0	CFSOA 84.1-14	-
			16.0	7.11	7.9	8.0	CFSOA 84.1-16	-
			18.0	7.11	7.9	8.0	CFSOA 84.1-18	-
			20.0	7.11	7.9	8.0	CFSOA 84.1-20	-
5.1	7.14	1.27	3.0	7.11	7.9	8.0	CFSOA 85.1-3	-
			4.0	7.11	7.9	8.0	CFSOA 85.1-4	-
			6.0	7.11	7.9	8.0	CFSOA 85.1-6	-
			8.0	7.11	7.9	8.0	CFSOA 85.1-8	-
			10.0	7.11	7.9	8.0	CFSOA 85.1-10	-
			12.0	7.11	7.9	8.0	CFSOA 85.1-12	-
			14.0	7.11	7.9	8.0	CFSOA 85.1-14	-
			16.0	7.11	7.9	8.0	CFSOA 85.1-16	-
			18.0	7.11	7.9	8.0	CFSOA 85.1-18	-
			20.0	7.11	7.9	8.0	CFSOA 85.1-20	-

Hole ø anvil = Dimension "A" +0.10/+0.18 mm.

Technical specifications

Thread/Hole ø B	Fastener material	Sheet material 1.5 mm aluminium (H 34)				Sheet material 1.5 mm steel			
		Installation force [kN]	Push-out [N]	Torque-out [Nm]	Pull-through [N]	Installation force [kN]	Push-out [kN]	Torque-out [Nm]	Pull-through [N]
M 3	Steel	4.7	700	1.20	1230	9.6	990	2.10	1450
3.1	Stainless steel	4.7	700	1.20	985	9.6	990	2.10	1150
	Aluminium	4.7	700	1.20	740	-	-	-	-
M 3	Steel	7.4	1310	2.79	1230	14.5	1850	3.90	1450
3.1/3.6	Stainless steel	7.4	1310	2.79	1100	14.5	1850	3.90	1150
	Aluminium	7.4	1310	2.79	810	-	-	-	-
M 4 / M 5	Steel	10.5	1750	5.01	2550	17.6	2460	8.45	3100
3.1/4.1/5.1	Stainless steel	10.5	1750	5.01	2020	17.6	2460	8.45	2450
	Aluminium	10.5	1750	5.01	1525	-	-	-	-



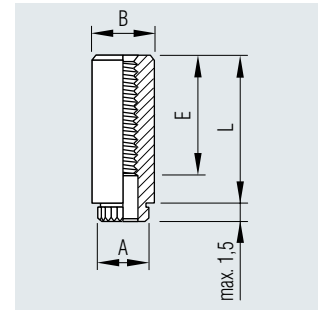
Captive® self-clinching fasteners

Self-clinching standoffs for plastics

Threaded

Material

	Steel, electroplated with tin (CKFE series) Suitable for sheet hardness HRB 60 or less		A2 stainless steel, 300 series, passivated (CKFSE series) Suitable for sheet hardness HRB 70 or less
--	---	--	---



Thread size	Bore \varnothing +0.08 -0.00 [mm]	L ± 0.13 [mm]	A ± 0.08 [mm]	B ± 0.13 [mm]	E ± 0.04 [mm]	min [mm]	Steel		Stainless steel	
							Description	Article No.	Description	Article No.
M 3	4.2	3.0	4.68	5.56	3.0	4.4	CKFE M 3-3	358 655 000	CKFSE M 3-3	-
		4.0	4.68	5.56	4.0	4.4	CKFE M 3-4	-	CKFSE M 3-4	-
		6.0	4.68	5.56	6.0	4.4	CKFE M 3-6	358 657 000	CKFSE M 3-6	-
		8.0	4.68	5.56	8.0	4.4	CKFE M 3-8	358 658 000	CKFSE M 3-8	-
		10.0	4.68	5.56	10.0	4.4	CKFE M 3-10	-	CKFSE M 3-10	-
		12.0	4.68	5.56	9.5 ¹	4.4	CKFE M 3-12	-	CKFSE M 3-12	-
		14.0	4.68	5.56	9.5 ¹	4.4	CKFE M 3-14	-	CKFSE M 3-14	-
		16.0	4.68	5.56	9.5 ¹	4.4	CKFE M 3-16	358 656 000	CKFSE M 3-16	-

Technical specifications

Thread size	1.5 mm fiberglass		
	Installation force [kN]	Push-out [N]	Torque-out [Nm] [Nm]
M 3	2.22	295	1.35

Guidelines only - the exact values will need to be calculated on the original component.



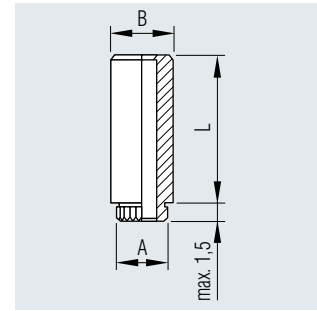
Captive® self-clinching fasteners

Self-clinching standoffs for plastics

Unthreaded

Material

	Steel, electroplated with tin (CKFE series) Suitable for sheet hardness HRB 60 or less		A2 stainless steel, 300 series, passivated (CKFSE series) Suitable for sheet hardness HRB 70 or less
--	---	--	---



Standoff \varnothing	Bore \varnothing	L	A	B	min [mm]	Steel		Stainless steel	
						Description	Article No.	Description	Article No.
+0.10 -0.08 [mm]	+0.08 -0.00 [mm]	± 0.13 [mm]	± 0.08 [mm]	± 0.13 [mm]	min [mm]	CKFE 3.6-3	-	CKFSE 3.6-3	-
						CKFE 3.6-4	358 964 000	CKFSE 3.6-4	-
						CKFE 3.6-6	358 969 000	CKFSE 3.6-6	-
						CKFE 3.6-8	358 968 000	CKFSE 3.6-8	-
						CKFE 3.6-10	-	CKFSE 3.6-10	-
						CKFE 3.6-12	-	CKFSE 3.6-12	-
						CKFE 3.6-14	358 987 000	CKFSE 3.6-14	-
						CKFE 3.6-16	-	CKFSE 3.6-16	-
4.2	6.4	± 0.13 [mm]	± 0.08 [mm]	± 0.13 [mm]	min [mm]	CKFE 4.2-3	-	CKFSE 4.2-3	-
						CKFE 4.2-4	-	CKFSE 4.2-4	-
						CKFE 4.2-6	-	CKFSE 4.2-6	-
						CKFE 4.2-8	-	CKFSE 4.2-8	-
						CKFE 4.2-10	-	CKFSE 4.2-10	-
						CKFE 4.2-12	-	CKFSE 4.2-12	358 660 000
						CKFE 4.2-14	-	CKFSE 4.2-14	-
						CKFE 4.2-16	-	CKFSE 4.2-16	-

Technical specifications

Internal \varnothing	1.5 mm fibreglass		
	Installation force	Push-out	Torque-out
[mm]	[kN]	[N]	[Nm]
3.6	2.22	295	1.35
4.2	2.22	295	1.35

Guidelines only - the exact values will need to be calculated on the original component.



Captive® self-clinching fasteners

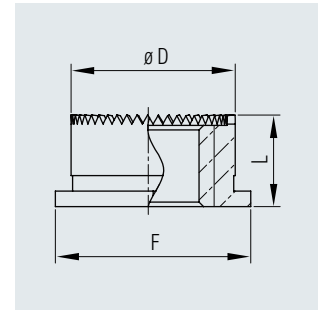
Self-clinching standoffs for plastics

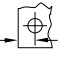
Threaded

Material

A2 stainless steel
 300 series, passivated
 Suitable for sheet
 hardness HRB 70
 or less

Aluminium (CFSOAG series)
 Suitable for sheet
 hardness HRB 50
 or less



Thread size	Bore ø +0.08 -0.00 [mm]	Material thickness min [mm]	L +0.25 -0.00 [mm]	D +0.00 -0.13 [mm]	SW (F)			Stainless steel		Aluminium	
					nom [mm]	min [mm]		Description	Article No.	Description	Article No.
M 3	5.41	1.0	3.0	5.38	6.4	6.86	CFSOSG 3.5 M 3-3	358 680 000	CFSOAG 3.5 M 3-3	-	
			4.0	5.38	6.4	6.86	CFSOSG 3.5 M 3-4	-	CFSOAG 3.5 M 3-4	-	
			6.0	5.38	6.4	6.86	CFSOSG 3.5 M 3-6	358 682 000	CFSOAG 3.5 M 3-6	-	
			8.0	5.38	6.4	6.86	CFSOSG 3.5 M 3-8	358 683 000	CFSOAG 3.5 M 3-8	-	
			10.0	5.38	6.4	6.86	CFSOSG 3.5 M 3-10	358 684 000	CFSOAG 3.5 M 3-10	-	
			12.0	5.38	6.4	6.86	CFSOSG 3.5 M 3-12	-	CFSOAG 3.5 M 3-12	-	
			14.0	5.38	6.4	6.86	CFSOSG 3.5 M 3-14	-	CFSOAG 3.5 M 3-14	-	

Technical specifications

Thread size	Test material	Installation force [kN]	Push-out [N]	Torque-out [Nm]
M 3	1.0 (H34) aluminium	8.0	1290	2.7

Guidelines only - the exact values will need to be calculated on the original component.



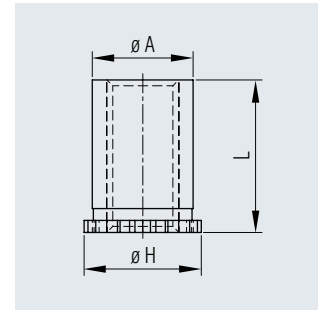
Captive® self-clinching fasteners

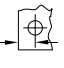
Self-clinching standoffs (through-threaded)

Especially for D-Sub connectors

Material

	Steel, yellow zinc-plated (CF40 series) Suitable for sheet hardness HRB 80 or less		A2 stainless steel, 300 series, passivated (CF40S series) Suitable for sheet hardness HRB 70 or less
--	---	--	---



Thread size	Bore ø +0.08 -0.00 [mm]	Material thickness min [mm]	L +0.05 -0.13 [mm]	A max [mm]	H nom [mm]	 min [mm]	Steel		Stainless steel	
							Description	Article No.	Description	Article No.
M 3	4.22	0.94 - 6.35	6.35	4.20	4.92	3.2	CF40 M 3-6.35	-	CF40S M 3-6.35	-
			7.0	4.20	4.92	3.2	CF40 M 3-7	-	CF40S M 3-7	-

Technical specifications

Thread size	Fastener	Test material	Installation force [kN]	Push-out [N]	Torque-out [Nm]
M 3	Steel	1.0 (H34) aluminium	4.5	223	1.1
M 3	Steel	1.0 steel	5.8	334	1.1
M 3	Stainless steel	1.0 (H34) aluminium	4.5	223	1.1
M 3	Stainless steel	1.0 steel	5.8	334	1.1

Guidelines only - the exact values will need to be calculated on the original component.



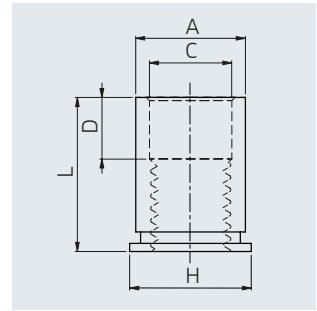
Captive® self-clinching fasteners

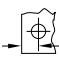
Self-clinching standoffs for metal

Through-hole

Material

Stainless steel, 400 series, passivated (CF4-SO series), suitable for sheet hardness HRB 88 or less



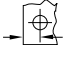
Thread size	Bore \varnothing +0.08 -0.00 [mm]	Material thickness min [mm]	L +0.05 -0.13 [mm]	A +0.00 -0.13 [mm]	H nom [mm]	C ± 0.13 [mm]	D ± 0.25 [mm]	 min [mm]	Stainless steel	
									Description	Article No.
M 3	4.22	1.02	3.0	4.2	4.8	3.2	0	6.0	CF4-SO M 3-3	-
			4.0	4.2	4.8	3.2	0	6.0	CF4-SO M 3-4	358 946 000
			6.0	4.2	4.8	3.2	0	6.0	CF4-SO M 3-6	358 717 000
			8.0	4.2	4.8	3.2	0	6.0	CF4-SO M 3-8	-
			10.0	4.2	4.8	3.2	4.0	6.0	CF4-SO M 3-10	-
			12.0	4.2	4.8	3.2	4.0	6.0	CF4-SO M 3-12	-
			14.0	4.2	4.8	3.2	4.0	6.0	CF4-SO M 3-14	-
			16.0	4.2	4.8	3.2	8.0	6.0	CF4-SO M 3-16	-
			18.0	4.2	4.8	3.2	8.0	6.0	CF4-SO M 3-18	-
	5.41	1.02	3.0	5.39	6.4	3.2	0	6.8	CF4-SO3.5 M 3-3	-
			4.0	5.39	6.4	3.2	0	6.8	CF4-SO3.5 M 3-4	-
			6.0	5.39	6.4	3.2	0	6.8	CF4-SO3.5 M 3-6	358 919 000
			8.0	5.39	6.4	3.2	0	6.8	CF4-SO3.5 M 3-8	358 925 000
			10.0	5.39	6.4	3.2	4.0	6.8	CF4-SO3.5 M 3-10	-
			12.0	5.39	6.4	3.2	4.0	6.8	CF4-SO3.5 M 3-12	-
			14.0	5.39	6.4	3.2	4.0	6.8	CF4-SO3.5 M 3-14	358 926 000
			16.0	5.39	6.4	3.2	8.0	6.8	CF4-SO3.5 M 3-16	-
			18.0	5.39	6.4	3.2	8.0	6.8	CF4-SO3.5 M 3-18	-

Continued on next page



Captive® self-clinching fasteners

Cont'd

Thread size	Bore \varnothing +0.08 -0.00 [mm]	Material thickness min [mm]	L +0.05 -0.13 [mm]	A +0.00 -0.13 [mm]	H nom [mm]	C ± 0.13 [mm]	D ± 0.25 [mm]	 min [mm]	Stainless steel	
									Description	Article No.
M 4	7.14	1.27	3.0	7.12	7.9	4.8	0	8.0	CF4-SO M 4-3	-
			4.0	7.12	7.9	4.8	0	8.0	CF4-SO M 4-4	-
			6.0	7.12	7.9	4.8	0	8.0	CF4-SO M 4-6	-
			8.0	7.12	7.9	4.8	0	8.0	CF4-SO M 4-8	-
			10.0	7.12	7.9	4.8	4.0	8.0	CF4-SO M 4-10	-
			12.0	7.12	7.9	4.8	4.0	8.0	CF4-SO M 4-12	-
			14.0	7.12	7.9	4.8	4.0	8.0	CF4-SO M 4-14	-
			16.0	7.12	7.9	4.8	8.0	8.0	CF4-SO M 4-16	-
			18.0	7.12	7.9	4.8	8.0	8.0	CF4-SO M 4-18	-
			20.0	7.12	7.9	4.8	8.0	8.0	CF4-SO M 4-20	-
			22.0	7.12	7.9	4.8	11.0	8.0	CF4-SO M 4-22	-
			25.0	7.12	7.9	4.8	11.0	8.0	CF4-SO M 4-25	-
M 5	7.14	1.27	3.0	7.12	7.9	5.35	0	8.0	CF4-SO M 5-3	-
			4.0	7.12	7.9	5.35	0	8.0	CF4-SO M 5-4	-
			6.0	7.12	7.9	5.35	0	8.0	CF4-SO M 5-6	-
			8.0	7.12	7.9	5.35	0	8.0	CF4-SO M 5-8	-
			10.0	7.12	7.9	5.35	4.0	8.0	CF4-SO M 5-10	-
			12.0	7.12	7.9	5.35	4.0	8.0	CF4-SO M 5-12	-
			14.0	7.12	7.9	5.35	4.0	8.0	CF4-SO M 5-14	-
			16.0	7.12	7.9	5.35	8.0	8.0	CF4-SO M 5-16	-
			18.0	7.12	7.9	5.35	8.0	8.0	CF4-SO M 5-18	-
			20.0	7.12	7.9	5.35	8.0	8.0	CF4-SO M 5-20	-
			22.0	7.12	7.9	5.35	11.0	8.0	CF4-SO M 5-22	-
			25.0	7.12	7.9	5.35	11.0	8.0	CF4-SO M 5-25	-



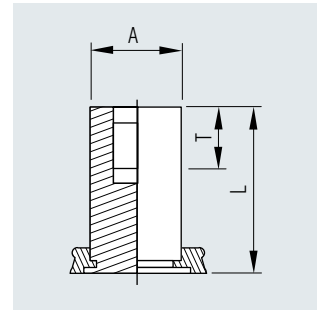
Captive® self-clinching fasteners

Self-clinching standoffs for metal

Blind-hole version

Material

Stainless steel, 400 series, passivated (CF4-BSO series), suitable for sheet hardness HRB 88 or less



Thread size	Bore ϕ +0.08 -0.00 [mm]	Material thickness min [mm]	L +0.05 -0.13 [mm]	A +0.00 -0.13 [mm]	SW nom [mm]	T ¹ min [mm]		Stainless steel	
								Description	Article No.
M 3	4.22	1.0	6.0	4.2	4.8	3.2	6.0	CF4-BSO M 3-6	-
			8.0	4.2	4.8	4.0	6.0	CF4-BSO M 3-8	-
			10.0	4.2	4.8	4.0	6.0	CF4-BSO M 3-10	-
			12.0	4.2	4.8	5.0	6.0	CF4-BSO M 3-12	-
			14.0	4.2	4.8	6.5	6.0	CF4-BSO M 3-14	-
			16.0	4.2	4.8	6.5	6.0	CF4-BSO M 3-16	358 615 000
			18.0	4.2	4.8	9.5	6.0	CF4-BSO M 3-18	-
			20.0	4.2	4.8	9.5	6.0	CF4-BSO M 3-20	-
			22.0	4.2	4.8	9.5	6.0	CF4-BSO M 3-22	-
			25.0	4.2	4.8	9.5	6.0	CF4-BSO M 3-25	-
	5.41	1.0	6.0	5.39	6.4	3.2	6.8	CF4-BSO3.5 M 3-6	-
			8.0	5.39	6.4	4.0	6.8	CF4-BSO3.5 M 3-8	-
			10.0	5.39	6.4	4.0	6.8	CF4-BSO3.5 M 3-10	-
			12.0	5.39	6.4	5.0	6.8	CF4-BSO3.5 M 3-12	358 929 000
			14.0	5.39	6.4	6.5	6.8	CF4-BSO3.5 M 3-14	-
			16.0	5.39	6.4	6.5	6.8	CF4-BSO3.5 M 3-16	358 616 000
			18.0	5.39	6.4	9.5	6.8	CF4-BSO3.5 M 3-18	-
			20.0	5.39	6.4	9.5	6.8	CF4-BSO3.5 M 3-20	-
			22.0	5.39	6.4	9.5	6.8	CF4-BSO3.5 M 3-22	-
			25.0	5.39	6.4	9.5	6.8	CF4-BSO3.5 M 3-25	-


¹ T = Thread length

Continued on next page



Captive® self-clinching fasteners

Cont'd

Thread size	Bore \varnothing +0.08 -0.00 [mm]	Material thickness min [mm]	L +0.05 -0.13 [mm]	A +0.00 -0.13 [mm]	SW nom [mm]	T ¹ min [mm]		Stainless steel	
								Description	Article No.
M 4	7.14	1.27	6.0	7.12	7.9	3.2	8.0	CF4-BSO M 4-6	358 488 000
			8.0	7.12	7.9	4.0	8.0	CF4-BSO M 4-8	-
			9.0	7.12	7.9	4.0	8.0	CF4-BSO M 4-9	358 802 000
			10.0	7.12	7.9	4.0	8.0	CF4-BSO M 4-10	-
			12.0	7.12	7.9	5.0	8.0	CF4-BSO M 4-12	-
			14.0	7.12	7.9	6.5	8.0	CF4-BSO M 4-14	-
			16.0	7.12	7.9	6.5	8.0	CF4-BSO M 4-16	-
			18.0	7.12	7.9	9.5	8.0	CF4-BSO M 4-18	-
			20.0	7.12	7.9	9.5	8.0	CF4-BSO M 4-20	-
			22.0	7.12	7.9	9.5	8.0	CF4-BSO M 4-22	-
M 5	7.14	1.27	6.0	7.12	7.9	3.2	8.0	CF4-BSO M 5-6	-
			8.0	7.12	7.9	4.0	8.0	CF4-BSO M 5-8	-
			10.0	7.12	7.9	4.0	8.0	CF4-BSO M 5-10	-
			12.0	7.12	7.9	5.0	8.0	CF4-BSO M 5-12	-
			14.0	7.12	7.9	6.5	8.0	CF4-BSO M 5-14	-
			16.0	7.12	7.9	6.5	8.0	CF4-BSO M 5-16	358 602 000
			18.0	7.12	7.9	9.5	8.0	CF4-BSO M 5-18	358 920 000
			20.0	7.12	7.9	9.5	8.0	CF4-BSO M 5-20	-
			22.0	7.12	7.9	9.5	8.0	CF4-BSO M 5-22	-
			25.0	7.12	7.9	9.5	8.0	CF4-BSO M 5-25	-

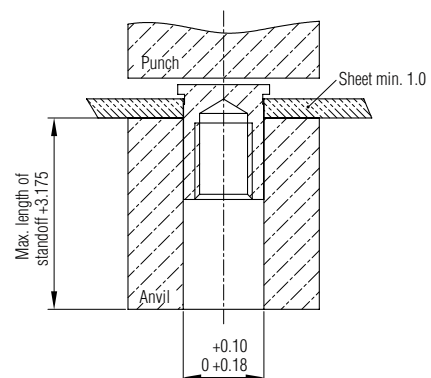
¹ T = Thread length

Technical specifications

Thread size	Sheet material: 1.3 mm stainless steel, 300 series			
	Installation force [kN]	Push-out [N]	Torque-out [Nm]	Pull-through [N]
M 3	24.5	1493	2.36	2650
3.5 M 3	42.3	2877	3.06	3025
M 4	46.7	4003	8.89	6458
M 5	46.7	4003	8.89	6226

Guidelines only - the exact values will need to be calculated on the original component.

1. Place the punch side of the standoff into the mounting hole in the anvil.
2. Insert the part to be fitted. Ensure that the punch and anvil are parallel to each other and that the standoff head is flush to the mounting sheet. Avoid applying too much pressure.





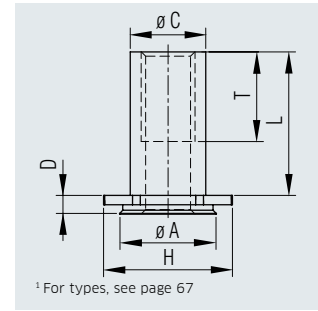
Captive® self-clinching fasteners

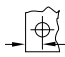
Concealed head standoffs

For blind milled holes

Material

A2 stainless steel, 300 series, passivated (CFHS series), suitable for sheet hardness HRB 70 or less



Thread size	Blind hole Ø	Material thickness	L ¹	Hole depth T	D	C	A	H		Stainless steel Description	Article No.		
	+0.08-0.00 [mm]	min [mm]	[mm]	min [mm]	max [mm]	max [mm]	max [mm]	nom [mm]	min [mm]				
M 3	5.41	1.6	4 A	1.1	5.0	1.04	4.2	5.39	6.35	4.8	CFHS-1 M 3-4	-	
			6 A	1.1	5.0	1.04	4.2	5.39	6.35	4.8	CFHS-1 M 3-6	-	
			8 B	1.1	5.0	1.04	4.2	5.39	6.35	4.8	CFHS-1 M 3-8	-	
			10 C	1.1	5.0	1.04	4.2	5.39	6.35	4.8	CFHS-1 M 3-10	-	
			12 C	1.1	5.0	1.04	4.2	5.39	6.35	4.8	CFHS-1 M 3-12	-	
			16 C	1.1	5.0	1.04	4.2	5.39	6.35	4.8	CFHS-1 M 3-16	-	
			20 C	1.1	5.0	1.04	4.2	5.39	6.35	4.8	CFHS-1 M 3-20	-	
			25 C	1.1	5.0	1.04	4.2	5.39	6.35	4.8	CFHS-1 M 3-25	-	
	2.4	5.41	1.6	4 A	1.91	5.0	1.83	4.2	5.39	6.35	4.8	CFHS-2 M 3-4	-
				6 A	1.91	5.0	1.83	4.2	5.39	6.35	4.8	CFHS-2 M 3-6	-
				8 C	1.91	5.0	1.83	4.2	5.39	6.35	4.8	CFHS-2 M 3-8	-
				10 C	1.91	5.0	1.83	4.2	5.39	6.35	4.8	CFHS-2 M 3-10	-
				12 C	1.91	5.0	1.83	4.2	5.39	6.35	4.8	CFHS-2 M 3-12	-
				16 C	1.91	5.0	1.83	4.2	5.39	6.35	4.8	CFHS-2 M 3-16	-
				20 C	1.91	5.0	1.83	4.2	5.39	6.35	4.8	CFHS-2 M 3-20	-
				25 C	1.91	5.0	1.83	4.2	5.39	6.35	4.8	CFHS-2 M 3-25	-
M 4	7.92	1.6	4 A	1.1	6.5	1.04	6.23	7.90	8.74	6.4	CFHS-1 M 4-4	-	
			6 A	1.1	6.5	1.04	6.23	7.90	8.74	6.4	CFHS-1 M 4-6	-	
			8 B	1.1	6.5	1.04	6.23	7.90	8.74	6.4	CFHS-1 M 4-8	-	
			10 B	1.1	6.5	1.04	6.23	7.90	8.74	6.4	CFHS-1 M 4-10	-	
			12 C	1.1	6.5	1.04	6.23	7.90	8.74	6.4	CFHS-1 M 4-12	-	
			16 C	1.1	6.5	1.04	6.23	7.90	8.74	6.4	CFHS-1 M 4-16	-	
			20 C	1.1	6.5	1.04	6.23	7.90	8.74	6.4	CFHS-1 M 4-20	-	
			25 C	1.1	6.5	1.04	6.23	7.90	8.74	6.4	CFHS-1 M 4-25	-	
	2.4	7.92	1.6	4 A	1.91	6.5	1.83	6.23	7.90	8.74	6.4	CFHS-2 M 4-4	-
				6 A	1.91	6.5	1.83	6.23	7.90	8.74	6.4	CFHS-2 M 4-6	-
				8 B	1.91	6.5	1.83	6.23	7.90	8.74	6.4	CFHS-2 M 4-8	-
				10 C	1.91	6.5	1.83	6.23	7.90	8.74	6.4	CFHS-2 M 4-10	-
				12 C	1.91	6.5	1.83	6.23	7.90	8.74	6.4	CFHS-2 M 4-12	-
				16 C	1.91	6.5	1.83	6.23	7.90	8.74	6.4	CFHS-2 M 4-16	-
				20 C	1.91	6.5	1.83	6.23	7.90	8.74	6.4	CFHS-2 M 4-20	-
				25 C	1.91	6.5	1.83	6.23	7.90	8.74	6.4	CFHS-2 M 4-25	-

Continued on next page



Captive® self-clinching fasteners

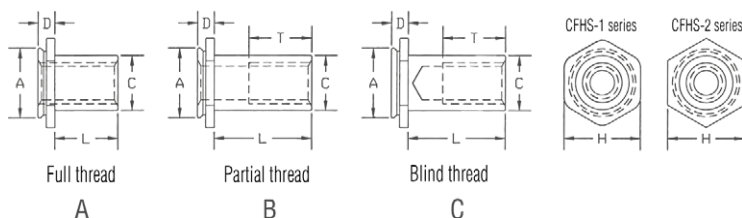
Cont'd

Thread size	Blind hole \varnothing +0.08 -0.00 [mm]	Material thickness min [mm]	L ¹ [mm]	Hole depth T		D [mm]	C [mm]	A [mm]	H [mm]		Stainless steel	
				min [mm]	min [mm]						Description	Article No.
M 5	8.74	1.6	4 A	1.1	9.6	1.04	7.37	8.72	9.53	7.2	CFHS-1 M 5-4	-
			6 A	1.1	9.6	1.04	7.37	8.72	9.53	7.2	CFHS-1 M 5-6	-
			8 B	1.1	9.6	1.04	7.37	8.72	9.53	7.2	CFHS-1 M 5-8	-
			10 B	1.1	9.6	1.04	7.37	8.72	9.53	7.2	CFHS-1 M 5-10	-
			12 B	1.1	9.6	1.04	7.37	8.72	9.53	7.2	CFHS-1 M 5-12	-
			16 C	1.1	9.6	1.04	7.37	8.72	9.53	7.2	CFHS-1 M 5-16	-
			20 C	1.1	9.6	1.04	7.37	8.72	9.53	7.2	CFHS-1 M 5-20	-
	25 C	1.1	9.6	1.04	7.37	8.72	9.53	7.2	CFHS-1 M 5-25	-		
	2.4	4 A	1.91	9.6	1.83	7.37	8.72	9.53	7.2	CFHS-2 M 5-4	-	
		6 A	1.91	9.6	1.83	7.37	8.72	9.53	7.2	CFHS-2 M 5-6	-	
		8 B	1.91	9.6	1.83	7.37	8.72	9.53	7.2	CFHS-2 M 5-8	-	
		10 B	1.91	9.6	1.83	7.37	8.72	9.53	7.2	CFHS-2 M 5-10	-	
		12 B	1.91	9.6	1.83	7.37	8.72	9.53	7.2	CFHS-2 M 5-12	-	
		16 C	1.91	9.6	1.83	7.37	8.72	9.53	7.2	CFHS-2 M 5-16	-	
20 C		1.91	9.6	1.83	7.37	8.72	9.53	7.2	CFHS-2 M 5-20	-		
25 C	1.91	9.6	1.83	7.37	8.72	9.53	7.2	CFHS-2 M 5-25	-			
M 6	9.9	2.4	4 A	1.91	9.6	1.83	9.0	9.89	11.11	9.5	CFHS-2 M 6-4	-
			6 A	1.91	9.6	1.83	9.0	9.89	11.11	9.5	CFHS-2 M 6-6	-
			8 A	1.91	9.6	1.83	9.0	9.89	11.11	9.5	CFHS-2 M 6-8	-
			10 B	1.91	9.6	1.83	9.0	9.89	11.11	9.5	CFHS-2 M 6-10	-
			12 B	1.91	9.6	1.83	9.0	9.89	11.11	9.5	CFHS-2 M 6-12	-
			16 C	1.91	9.6	1.83	9.0	9.89	11.11	9.5	CFHS-2 M 6-16	-
			20 C	1.91	9.6	1.83	9.0	9.89	11.11	9.5	CFHS-2 M 6-20	-
			25 C	1.91	9.6	1.83	9.0	9.89	11.11	9.5	CFHS-2 M 6-25	-

Technical specifications

Series	Thread size	Tightening torque max [Nm]	■ Steel		■ Aluminium (H 34)	
			Installation force [kN]	Push-out [N]	Installation force [kN]	Push-out [N]
CFHS-1	M3	0.55	17.8	1330	12.5	890
	M4	2	21.3	1775	17.8	1200
	M5	3.6	24.5	2000	22.2	1290
CFHS-2	M3	0.55	19.2	1465	12.9	975
	M4	2	23.6	1955	17.8	1335
	M5	3.6	26.7	2665	22.2	1775
	M6	7.2	28.9	2860	24.4	1915

Types



Subject to change